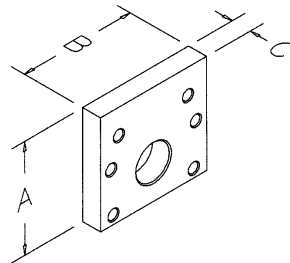
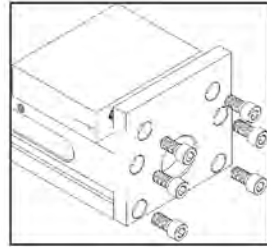


## Single Station Conversion Plate for ReLock 2-Station Vise



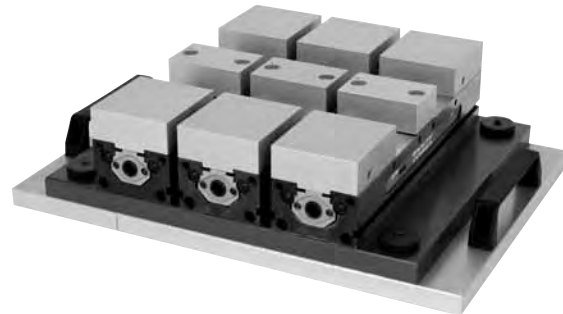
**Converts a double station vise to a single station!**

- The single station conversion plate, used in conjunction with SnapLock carrier jaw, allows the system to be converted from a double to a single station.
- Capacities and configuration examples are illustrated at left.
- Single station conversion plate is not compatible with DS6000 vise

| Vise Size | Part Number | A     | B     | C    |
|-----------|-------------|-------|-------|------|
| 4"        | RCP4002     | 4.163 | 4.000 | .720 |
| 6"        | RCP6002     | 5.538 | 6.000 | .720 |
| 8"        | RCP8002     | 7.093 | 8.000 | .970 |

## ReLock 2 and 8-Station Capacities

The compact design of the Toolex vise allows you to mount the vises very closely to each other without interference. The SnapLock line of jaws allows you to literally "snap" jaws and accessories on and off the vise without the use of bolts or pins. For applications requiring a subplate or fixture plate, please fill out the Plate Quotation Worksheet found on page 202.



| RELOCK 2 & 8 STATION CAPACITIES |        |        |        |                     |        |        |        |  |
|---------------------------------|--------|--------|--------|---------------------|--------|--------|--------|--|
| MACHINABLE JAWS                 | 4"     | 6"     | 8"     | CARRIER & HARD JAWS | 4"     | 6"     | 8"     |  |
|                                 | 4.125  | 5.125  | 7.625  |                     | 3.000  | 4.000  | 6.000  |  |
|                                 | 6.875  | 9.060  | 12.812 |                     | 7.375  | 9.500  | 13.250 |  |
|                                 | 9.500  | 11.625 | 17.125 |                     | 7.250  | 9.500  | 14.000 |  |
|                                 | 12.250 | 15.562 | 22.312 |                     | 11.625 | 15.000 | 21.250 |  |
|                                 | 15.000 | 19.500 | 27.500 |                     | 16.000 | 20.500 | 28.500 |  |