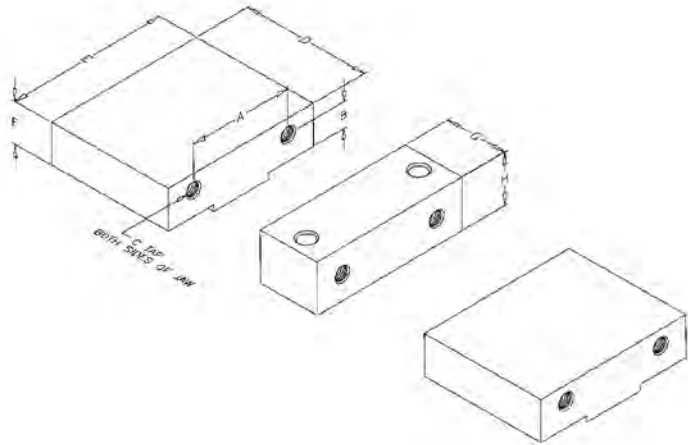
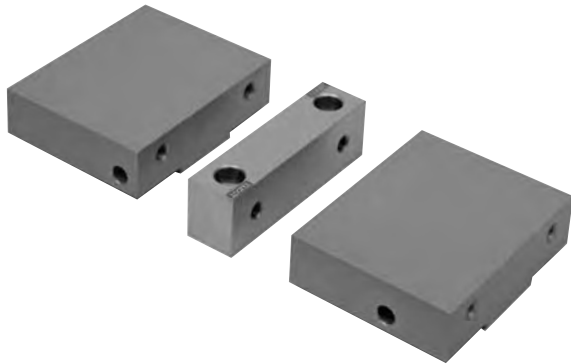


SnapLock Carrier Jaws



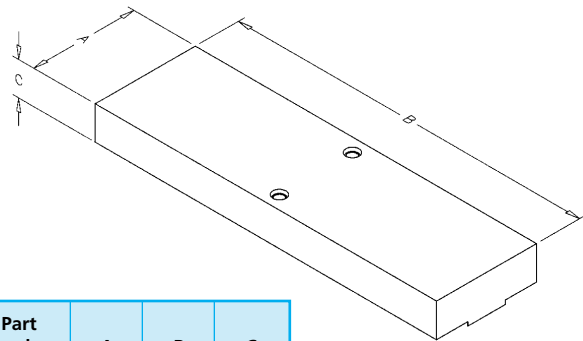
- Outside jaws manufactured from high quality aluminum material; center jaw manufactured from steel.
- Carrier jaws are to be used in conjunction with AccuSnap (page 178) and QuickChange master jaws (page 185).
- Outside jaws can be used in conjunction with single station conversion plates (pages 167 and 170).
- SnapLock Jaws are to be used with the ReLock system only.
- Two socket head cap screws included with each outside jaw.

Single Station Conversion Plates are available on pages 167 and 170.



Vise Size	Part Description	Part Number		A	B	C	D	E	F	G	H
		Aluminum	Steel								
4"	2 Outside	SCJ4000	SCJ4020	2.500	.687	3/8-16	3.812	3.94	1.12	-	-
	1 Center	-	SCJ4030	2.500	.687	3/8-16	-	3.94	1.12	1.250	1.350
	3 pc. Set	SCJ4035	SCJ4025	2.500	.687	3/8-16	3.812	3.94	1.12	1.250	1.350
6"	2 Outside	SCJ6000	SCJ6020	3.875	.937	1/2-13	4.750	5.94	1.52	-	-
	1 Center	-	SCJ6030	3.875	.937	1/2-13	-	5.94	-	1.500	1.850
	3 pc. Set	SCJ6035	SCJ6025	3.875	.937	1/2-13	4.750	5.94	1.52	1.500	1.850
8"	2 Outside	SCJ8000	SCJ8020	4.750	1.218	5/8-11	6.125	7.94	2.12	-	-
	1 Center	-	SCJ8030	4.750	1.218	5/8-11	-	7.94	-	1.980	2.35
	3 pc. Set	SCJ8035	SCJ8025	4.750	1.218	5/8-11	6.125	7.94	2.12	1.980	2.35

SnapLock Fixture Plates



- Manufactured from high quality aluminum material.
- Ideal for holding many small parts or workpieces with difficult clamping or locating points.
- SnapLock plates are used only with the ReLock system.

Vise Size	Part Number	A	B	C
4"	SFP4000	4.000	16.000	1.500
	SFP4001	6.000	16.000	1.500
6"	SFP6000	6.000	20.500	2.000
	SFP6001	8.000	20.500	2.000
8"	SFP8000	8.000	28.500	2.500
	SFP8001	10.000	28.500	2.500