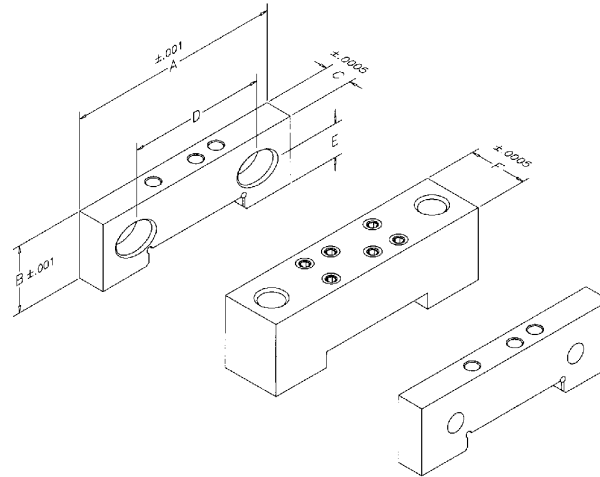


## AccuSnap Master Jaws

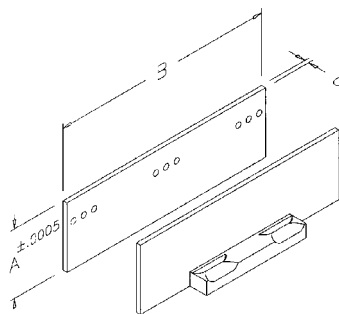


**Adaptable to most vise jaw systems!**

- For ReLock applications, AccuSnap master jaws mount to the SnapLock carrier jaws and accept all AccuSnap jaw components.
- Install AccuSnap master jaws to SnapLock carrier jaws on vise for squareness.
- Replacement parts are available (page 200).
- 3-piece set includes wrench.

Vise Size	Part Description	Part Number	A	B	C	D	E	F
4"	3 pc. Set	<b>AMJ4035</b>	3.980	1.350	.560	2.500	.687	–
	2 Outside	<b>AMJ4000</b>	3.980	1.350	.560	2.500	.687	–
	1 Center	<b>AMJ4030</b>	3.980	1.350	–	2.500	.687	1.250
6"	3 pc. Set	<b>AMJ6035</b>	5.980	1.850	.750	3.875	.937	–
	2 Outside	<b>AMJ6000</b>	5.980	1.850	.750	3.875	.937	–
	1 Center	<b>AMJ6030</b>	5.980	1.850	–	3.875	.937	1.500
8"	3 pc. Set	<b>AMJ8035</b>	7.980	2.350	1.125	4.750	1.218	–
	2 Outside	<b>AMJ8000</b>	7.980	2.350	1.125	4.750	1.218	–
	1 Center	<b>AMJ8030</b>	7.980	2.350	–	4.750	1.218	2.000

## AccuSnap Individual Parallel Sets



- Use in conjunction with AccuSnap master jaws (above).
- Parallels "snap" into position quickly and easily.
- Parallels are ejected from the master jaws via a patented kick out pawl assembly.
- Packaged two to a set.
- Can be used in conjunction with AccuSnap modular workstops shown on page 182.
- Expanded parallel sets available on page 179.

Vise Size	Part Number	A	B	C
4"	<b>AIP4001*</b>	.500	3.980	.118
	<b>AIP4002*</b>	.625	3.980	.118
	<b>AIP4003*</b>	.750	3.980	.118
	<b>AIP4004</b>	.875	3.980	.118
	<b>AIP4005</b>	1.000	3.980	.118
	<b>AIP4006</b>	1.125	3.980	.118
	<b>AIP4007</b>	1.250	3.980	.118
	<b>AIP4008</b>	1.312	3.980	.118
6"	<b>AIP6001*</b>	.750	5.980	.118
	<b>AIP6002*</b>	1.000	5.980	.118
	<b>AIP6003</b>	1.125	5.980	.118
	<b>AIP6004</b>	1.250	5.980	.118
	<b>AIP6005</b>	1.375	5.980	.118
	<b>AIP6006</b>	1.500	5.980	.118
	<b>AIP6007</b>	1.625	5.980	.118
	<b>AIP6008</b>	1.750	5.980	.118
8"	<b>AIP8001*</b>	1.000	7.980	.118
	<b>AIP8002</b>	1.250	7.980	.118
	<b>AIP8003</b>	1.375	7.980	.118
	<b>AIP8004</b>	1.500	7.980	.118
	<b>AIP8005</b>	1.625	7.980	.118
	<b>AIP8006</b>	1.750	7.980	.118
	<b>AIP8007</b>	1.875	7.980	.118
	<b>AIP8008</b>	2.000	7.980	.118
	<b>AIP8009</b>	2.125	7.980	.118
	<b>AIP8010</b>	2.250	7.980	.118

\*Do not include center mounting holes for AccuSnap Modular Workstops