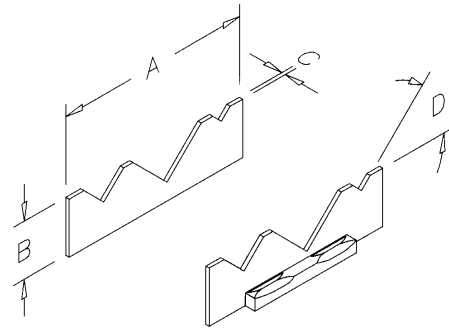


## AccuSnap Mill Angle Kits

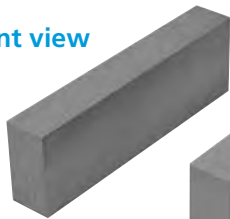


- Designed to be used with the AccuSnap master jaws on page 178.
- AccuSnap individual mill angles are on page 179.

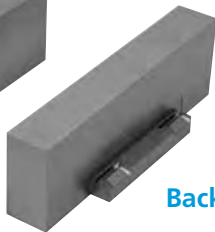
Vise Size	Part Number	A	B	C	(1 of each degree) D
4"	AMA4000	4.000	1.240	.118	20 25 30
					35 40 45
6"	AMA6000	6.000	1.740	.118	20 25 30
					35 40 45
8"	AMA8000	8.000	2.230	.118	20 25 30
					35 40 45

## AccuSnap Machinable Fixture Jaws

Front view



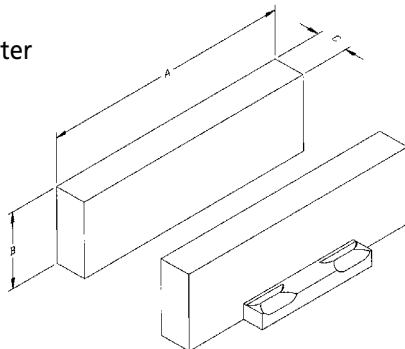
Sold as individual units



Back view

Can be modified to fit your individual needs.

- Use in conjunction with AccuSnap master jaws on page 178.
- Jaws "snap" into position quickly and easily.
- Jaws are ejected from the master jaws via a kick out pawl assembly.



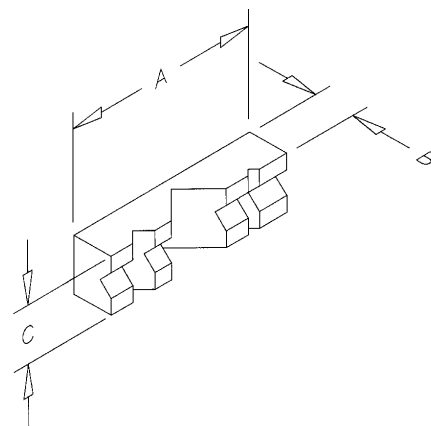
Vise Size	Part Number		A	B	C
	Aluminum	Steel			
4"	ASJ4000	ASJ4020	3.980	1.500	.690
	ASJ4001	ASJ4021			1.255
6"	ASJ6000	ASJ6020	5.980	2.000	.750
	ASJ6001	ASJ6021			1.500
8"	ASJ8000	ASJ8020	7.980	2.500	1.250
	ASJ8001	ASJ8021			2.500

## AccuSnap "V" Jaws



Sold as individual units

AccuSnap "V" jaws are designed to be used with AccuSnap master jaws on page 178.



Vise Size	Part Number	A	B	C
4"	AVJ4000	4.00	1.00	1.24
6"	AVJ6000	6.00	1.25	1.74
8"	AVJ8000	8.00	1.75	2.24