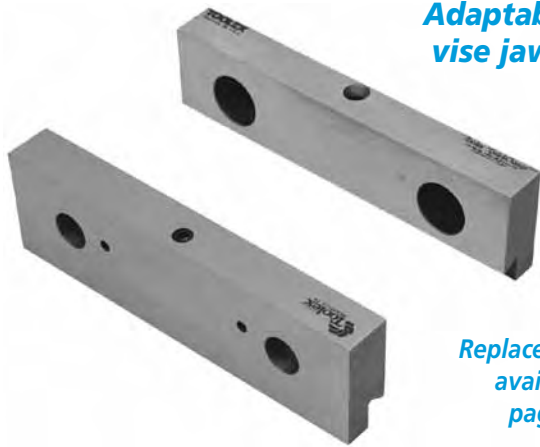
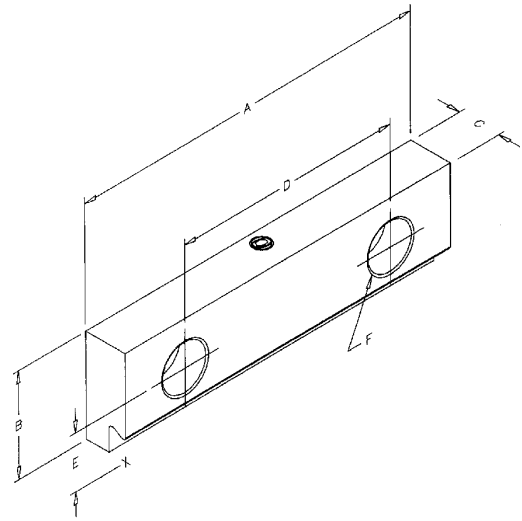


QuickChange Master Jaws



**Adaptable to most
vise jaw systems!**

**Replacement parts
available on
page 201.**

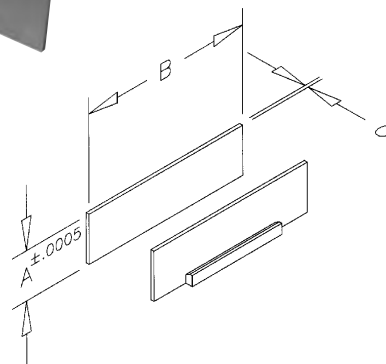
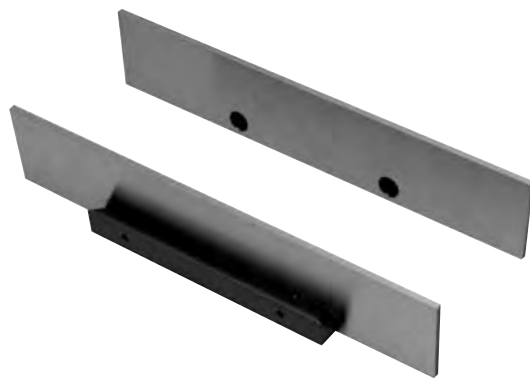


- For ReLock applications, QuickChange master jaws mount to the SnapLock carrier jaws and accept all QuickChange jaw components.
- Install QuickChange master jaws to Snaplock carrier jaws on vise for squareness.
- Accessories slide into position via a dovetail slot.

Vise Size	Part Number	A	B	C	D	E	F
4"	QMJ4000	4.06	1.235	.560	2.500	.687	3/8-16 SHCS
6"	QMJ6000	6.12	1.735	.735	3.875	.937	1/2-13 SHCS
8"	QMJ8000	8.12	2.230	1.105	4.750	1.128	5/8-11 SHCS

Before mounting QuickChange Master Jaws, thoroughly inspect, clean and remove any burrs or chips from mounting surface.

QuickChange Individual Parallel Sets



- QuickChange parallels are designed to be used with QuickChange master jaws.
- Parallels are packaged 2 per set.
- Expanded QuickChange parallel sets are available on page 186.

Before mounting QuickChange Master Jaws, thoroughly inspect, clean and remove any burrs or chips from mounting surface.

Vise Size	Part Number	A	B	C
4"	QIP4001	.500	3.980	.118
	QIP4002	.625	3.980	.118
	QIP4003	.750	3.980	.118
	QIP4004	.875	3.980	.118
	QIP4005	1.000	3.980	.118
	QIP4006	1.062	3.980	.118
	QIP4007	1.125	3.980	.118
	QIP4008	1.190	3.980	.118
6"	QIP6001	.750	5.980	.118
	QIP6002	.875	5.980	.118
	QIP6003	1.000	5.980	.118
	QIP6004	1.125	5.980	.118
	QIP6005	1.250	5.980	.118
	QIP6006	1.375	5.980	.118
	QIP6007	1.500	5.980	.118
	QIP6008	1.625	5.980	.118
	QIP6009	1.690	5.980	.118
8"	QIP8001	1.000	7.980	.118
	QIP8002	1.250	7.980	.118
	QIP8003	1.375	7.980	.118
	QIP8004	1.500	7.980	.118
	QIP8005	1.625	7.980	.118
	QIP8006	1.750	7.980	.118
	QIP8007	1.875	7.980	.118
	QIP8008	2.000	7.980	.118
	QIP8009	2.125	7.980	.118