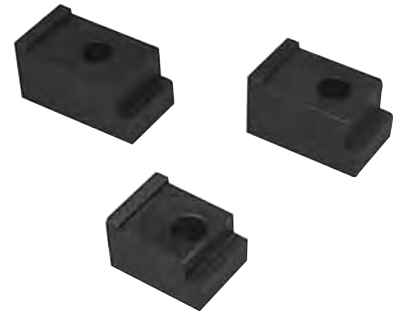
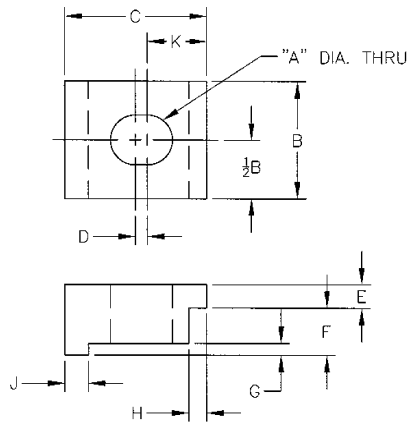


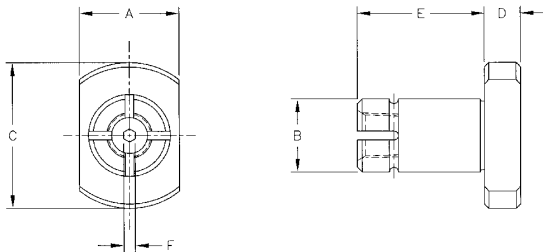
Vise Clamps

- Adaptable to most vises
- Vise Clamps are used to secure vise to tooling plate or machine table.
- Insert clamp nose into groove on side of vise.
- Use clamps with standard socket head cap screws.
- Black Oxide Finish and Case Hardened
- Material: 1018 Steel



Vise Size	Part Number	Screw Size A	B	C	D	E	F	G	H	J	K
4"	RWS4553	3/8	1.25	1.50	.13	.25	.50	.13	.19	.25	.63
4"	RWS4554	1/2	1.25	1.50	.13	.25	.50	.13	.19	.25	.63
6"	RWS6553	3/8	1.25	2.12	.13	.50	.75	.19	.25	.25	.85
6"	RWS6554	1/2	1.25	2.12	.13	.50	.75	.19	.25	.25	.85
6"	RWS6555	5/8	1.25	2.12	.13	.50	.75	.19	.25	.25	.85

Sine Fixture Keys



Vise Size	Part Number	A	B	C	D	E	F
4" and 6"	81651	.4995	.5004	1.00	.250	.50	.156
	81656	.687	.5004	1.00	.250	.50	.156
	81661	.8115	.5004	1.00	.250	.875	.156
8"	81666	.8115	.7504	1.812	.250	.875	.188
	81667	1.062	.7504	1.812	.250	.875	.188

Precision keys allow accurate and precise positioning of vise to machine table.

Chip Shield Covers for Toolex Double Station Vise



- Three piece set includes two outside and one center chip shield.
- Fits the Toolex Double Station and Eight Station Vises only.
- Chip shields cover vise segment screw mechanism to keep out chips and debris.

Vise Size	Part Number
4"	RWS4561
6"	RWS6561
8"	RWS8561