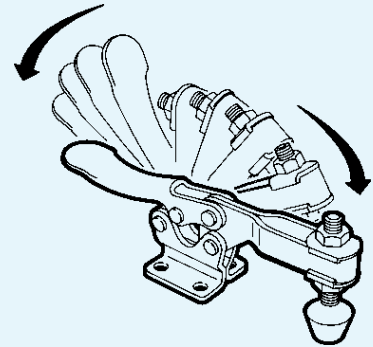


Horizontal Handle Toggle Clamps

- U-Bar allows the spindle to be located anywhere on bar length
- All clamps supplied with spindle assembly
- Handles stay clear of the workpiece while machining
- Flanged bases provide optimum holding pressure

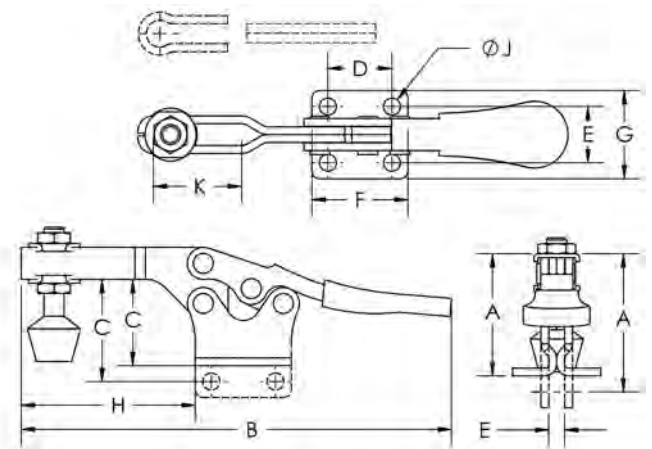
All TE-CO Toggle Clamps are interchangeable with industry standards



Horizontal Handle Toggle Clamps Part Numbers 34105, 34101



Bar Opens: 90°
Handle Opens: 80°
Spindle Type: Nylon Hex Head
Spindle Size: #8-32 X .75

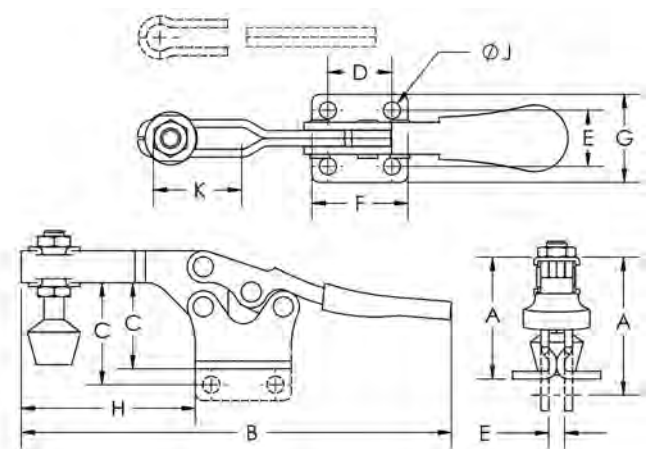


| Part No. | A | B | C | D | E | F | G | H | J | K | L | Bar Type | Base Type | Holding Cap. Lbs. | Handle Type |
|----------|------|------|------|------|------|------|------|------|------|------|---|------------|-----------|-------------------|-------------|
| 34105 | 0.70 | 3.10 | 0.34 | 0.42 | 0.65 | 0.95 | 0.98 | 0.78 | 0.17 | 0.48 | - | ADJUSTABLE | FLANGED | 60 | STANDARD |
| 34101 | 0.73 | 3.24 | 0.42 | 0.41 | 0.64 | 0.95 | 0.99 | 0.87 | 0.17 | - | - | SOLID BAR | FLANGED | 60 | STANDARD |

Horizontal Handle Toggle Clamps Part Number 34107



Bar Opens: 85°
Handle Opens: 60°
Spindle Type: Bonded Neoprene
Spindle Size: 1/4-20 X 2.13



| Part No. | A | B | C | D | E | F | G | H | J | K | L | Bar Type | Base Type | Holding Cap. Lbs. | Handle Type |
|----------|------|------|------|------|------|------|------|------|------|---|---|-----------|-----------|-------------------|-------------|
| 34107 | 1.53 | 5.90 | 1.00 | 0.98 | 0.83 | 1.46 | 1.34 | 2.27 | 0.21 | - | - | SOLID BAR | FLANGED | 200 | STANDARD |