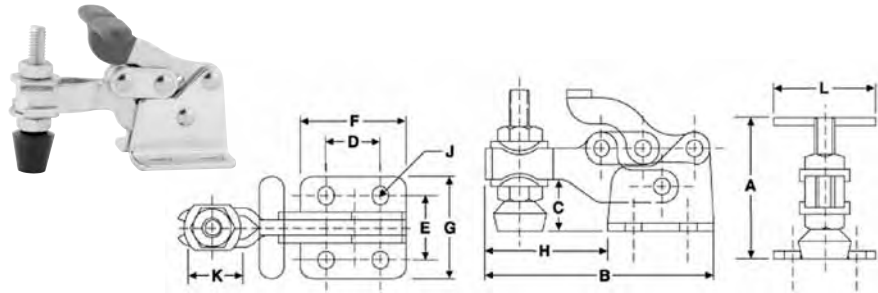


TOGGLE CLAMPS



Horizontal Handle Toggle Clamps Part Numbers 34113, 34114, 34115

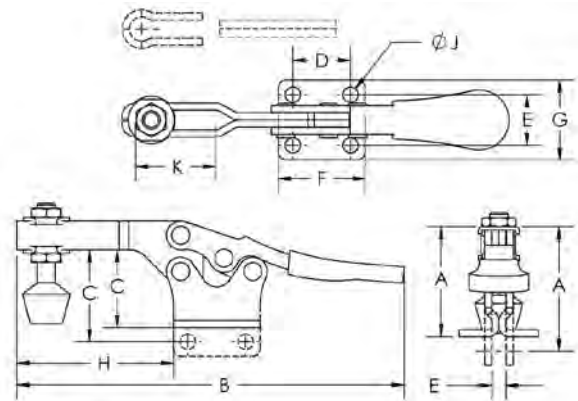
Bar Opens: 90°
Handle Opens: 170°
Spindle Type: Bonded Neoprene
Spindle Size:
• #10-24 X 1.38 (34113)
• 5/16-18 X 2.50 (34114)
• 3/8-16 X 3.50 (34115)



Part No.	A	B	C	D	E	F	G	H	J	K	L	Bar Type	Base Type	Holding Cap. Lbs.	Handle Type
34113	1.47	2.30	0.65	0.53	0.66	1.03	1.03	1.26	0.17	0.44	1.32	ADJUSTABLE BAR	FLANGED	150	STANDARD
34114	2.49	3.68	0.89	0.91	1.17	1.72	1.82	1.93	0.28	0.77	2.01	ADJUSTABLE BAR	FLANGED	350	STANDARD
34115	3.73	5.33	1.31	1.38	1.50	2.52	2.52	2.81	0.31	1.32	2.48	ADJUSTABLE BAR	FLANGED	750	STANDARD

Horizontal Handle Toggle Clamps Part Number 34120

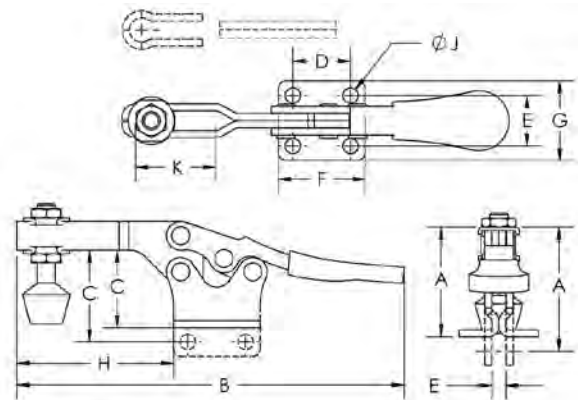
Bar Opens: 90°
Handle Opens: 65°
Spindle Type: Bonded Neoprene
Spindle Size: 5/16-18 X 3.00



Part No.	A	B	C	D	E	F	G	H	J	K	L	Bar Type	Base Type	Holding Cap. Lbs.	Handle Type
34120	1.96	6.88	1.31	0.99	0.89	1.51	1.36	2.91	0.28	1.31	-	ADJUSTABLE BAR	FLANGED	500	STANDARD

Horizontal Handle Toggle Clamps Part Number 34130

Bar Opens: 85°
Handle Opens: 50°
Spindle Type: Bonded Neoprene
Spindle Size: 3/8-16 X 3.50



Part No.	A	B	C	D	E	F	G	H	J	K	L	Bar Type	Base Type	Holding Cap. Lbs.	Handle Type
34130	2.55	10.40	1.73	1.62	1.60	2.25	2.23	4.29	0.31	2.74	-	ADJUSTABLE BAR	FLANGED	750	STANDARD