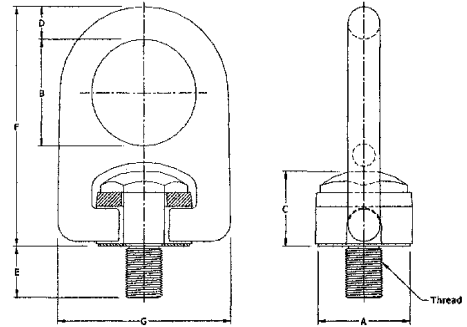




HOIST RINGS

Tuff Forged™ Swivel Hoist Rings Swivels 360 degrees – pivots 180 degrees

- Material: Alloy Certified Aircraft Quality
- Finish: Phosphate per DOD-P-16232F (cadmium plated available)
- Certified heat treatment
- 100% magnetic particle inspected
- Rated loads from 600-24,000 lbs.
- 200% proof-load tested, with serial number for traceability
- Safety Factor: 5:1



Inch

Part No.	Rated Load (lbs.)	Thread Size	A	B	C	D	E	F	G	Torque (Ft/lbs)	Wt. (lbs.)
AK56100	600	1/4-20	1.23	1.40	1.16	0.44	0.50	3.29	2.38	5	1.0
AK56102	800	5/16-18	1.23	1.40	1.16	0.44	0.50	3.29	2.38	7	1.0
AK56104	800	5/16-18	1.23	1.40	1.16	0.44	1.00	3.29	2.39	7	1.0
AK56106	1,000	3/8-16	1.23	1.40	1.16	0.44	0.50	3.29	2.38	12	1.0
AK56107	1,000	3/8-16	1.23	1.40	1.16	0.44	1.00	3.29	2.38	12	1.0
AK56008	2,500	1/2-13	2.10	2.40	1.97	0.75	0.75	5.60	4.05	28	4.0
AK56010	2,500	1/2-13	2.10	2.40	1.97	0.75	1.00	5.60	4.05	28	4.0
AK56012	2,500	1/2-13	2.10	2.40	1.97	0.75	1.25	5.60	4.05	28	4.0
AK56002	4,000	5/8-11	2.10	2.40	1.97	0.75	0.75	5.60	4.05	60	4.0
AK56004	4,000	5/8-11	2.10	2.40	1.97	0.75	1.00	5.60	4.05	60	4.0
AK56006	4,000	5/8-11	2.10	2.40	1.97	0.75	1.25	5.60	4.05	60	4.0
AK56014	5,000	3/4-10	2.10	2.40	1.97	0.75	1.00	5.60	4.05	100	4.0
AK56018	5,000	3/4-10	2.10	2.40	1.97	0.75	1.50	5.60	4.05	100	4.0
AK56204	7,000	3/4-10	2.80	3.20	2.62	1.00	1.00	7.48	5.40	100	9.0
AK56203	7,000	3/4-10	2.80	3.20	2.62	1.00	1.25	7.48	5.40	100	9.0
AK56206	7,000	3/4-10	2.80	3.20	2.62	1.00	1.50	7.48	5.40	100	9.0
AK56202	8,000	7/8-9	2.80	3.20	2.62	1.00	1.00	7.48	5.40	160	9.0
AK56205	8,000	7/8-9	2.80	3.20	2.62	1.00	1.25	7.48	5.40	160	9.0
AK56210	10,000	1-8	2.80	3.20	2.62	1.00	1.25	7.48	5.40	230	9.0
AK56212	10,000	1-8	2.80	3.20	2.62	1.00	1.50	7.48	5.40	230	9.0
AK56214	10,000	1-8	2.80	3.20	2.62	1.00	2.25	9.35	5.40	230	9.0
AK56802	15,000	1-1/4-7	3.50	4.00	3.28	1.25	2.00	9.35	6.75	470	18.0
AK56804	15,000	1-1/4-7	3.50	4.00	3.28	1.25	2.75	9.35	6.75	470	18.0
AK56702	20,000	1-3/8-6	3.50	4.00	3.28	1.25	2.75	9.35	6.75	540	19.0
AK56404	24,000	1-1/2-6	3.50	4.00	3.28	1.25	2.75	9.35	6.75	800	19.0



Metric

Part No.	Rated Load (Kgs.)	Thread Size	A	B	C	D	(mm) E	F	G	Torque (Kgm)	Wt. (lbs.)
AK56912	400	M8x1.25	1.23	1.40	1.16	0.44	15	3.29	2.38	9	1.0
AK56914	400	M8x1.25	1.23	1.40	1.16	0.44	20	3.29	2.38	9	1.0
AK56916	500	M10x1.50	1.23	1.40	1.16	0.44	15	3.29	2.39	16	1.0
AK56918	500	M10x1.50	1.23	1.40	1.16	0.44	25	3.29	2.38	16	1.0
AK56924	1,050	M12x1.75	2.10	2.40	1.97	0.75	25	5.60	4.05	37	4.0
AK56926	1,050	M12x1.75	2.10	2.40	1.97	0.75	35	5.60	4.05	37	4.0
AK56930	1,900	M16x2.00	2.10	2.40	1.97	0.75	25	5.60	4.05	80	4.0
AK56932	1,900	M16x2.00	2.10	2.40	1.97	0.75	35	5.60	4.05	80	4.0
AK56936	2,150	M20x2.50	2.10	2.40	1.97	0.75	25	5.60	4.05	135	4.0
AK56938	2,150	M20x2.50	2.10	2.40	1.97	0.75	40	5.60	4.05	135	4.0
AK56942	3,000	M20x2.50	2.80	3.20	2.62	1.00	30	7.48	5.40	135	9.0
AK56946	4,200	M24x3.00	2.80	3.20	2.62	1.00	30	7.48	5.40	311	9.0
AK56948	4,200	M24x3.00	2.80	3.20	2.62	1.00	40	7.48	5.40	311	9.0
AK56949	4,200	M30x3.50	2.80	3.20	2.62	1.00	40	7.48	5.40	637	9.0
AK56950	4,200	M30x3.50	2.80	3.20	2.62	1.00	50	7.48	5.40	637	9.0
AK56956	7,000	M30x3.50	3.50	4.00	3.28	1.25	50	9.35	6.75	637	19.0
AK56960	7,000	M33x3.50	3.50	4.00	3.28	1.25	55	9.35	6.75	637	19.0
AK56966	11,000	M36x4.00	3.50	4.00	3.28	1.25	65	9.35	6.75	1085	20.0
AK56968	12,500	M42x4.50	3.50	4.00	3.28	1.25	85	9.35	6.75	1085	21.0