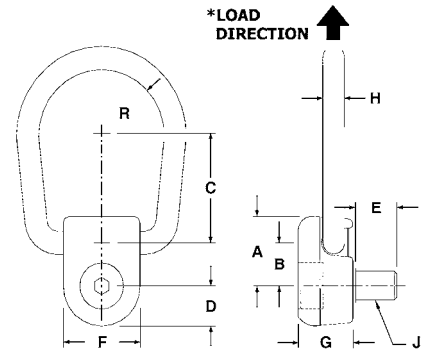


HOIST RINGS



Tuff Forged™ Side Pull Hoist Ring Swivels 360 degrees

- Material: Alloy "chrome moly"
- Finish: Phosphate per DOD-P-16232F
- Safety Factor: 5:1 (*side pull direction only)
- 100% magnetic particle inspected
- Certified heat treatment
- Rated loads from 1,000 lbs. to 5,000 lbs.



Inch

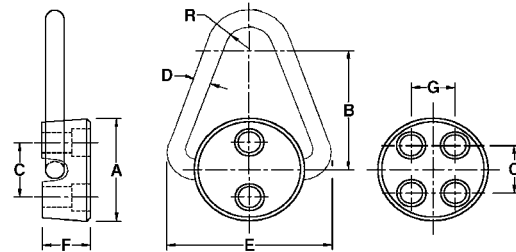
Part No.	Rated Load (lbs.)	Thread Size	A	B	C	D	E	F	G	H	J	R	Wt. (lbs.)
AK68210	1,000	3/8-16	1-1/8	5/8	1-1/2	5/8	5/8	1-1/4	7/8	5/16	3/8-16	13/16	.7
AK68220	2,000	1/2-13	1-5/8	7/8	1-7/8	7/8	3/4	1-3/4	1-5/16	7/16	1/2-13	1-1/8	1.7
AK68225	2,500	5/8-11	1-5/8	7/8	1-7/8	7/8	7/8	1-3/4	1-5/16	7/16	5/8-11	1-1/8	1.7
AK68250	5,000	3/4-10	2-3/16	1-1/8	2-3/4	1	1	2	1-11/16	5/8	3/4-10	1-3/8	3.5

Metric

Part No.	Rated Load (lbs.)	Thread Size	A	B	C	D	E	F	G	H	J	R	Wt. (lbs.)
AK68310	1,000	M10x1.50	1-1/8	5/8	1-1/2	5/8	0.6	1-1/4	7/8	5/16	M10x1.50	13/16	.7
AK68320	2,000	M12x1.75	1-5/8	7/8	1-7/8	7/8	0.7	1-3/4	1-5/16	7/16	M12x1.75	1-1/8	1.7
AK68325	2,500	M16x2.00	1-5/8	7/8	1-7/8	7/8	0.8	1-3/4	1-5/16	7/16	M16x2.00	1-1/8	1.7
AK68350	5,000	M20x2.50	2-3/16	1-1/8	2-3/4	1	1	2	1-11/16	5/8	M20x2.50	1-3/8	3.5

Forged Hoist Rings

- Pivots a full 180 degrees, but do not rotate
- Fixed mounting plate holds ring secure
- Material: Aircraft Quality Alloy "chrome moly"
- Finish: Black oxide per mil spec.
- Certified heat treatment
- 100% magnetic particle inspected
- Rated loads from 2,000 to 20,000 lbs.
- Safety Factor: 6:1



To obtain maximum load capacity, high strength alloy screws must be used.



Hoist Ring Part No.	Standard Screw			Metric Screw			Wt. (lbs.)
	Part No.	Thread Size	Screw Length	Part No.	Thread Size	Screw Length	
AK68060	AK46144	5/16-18	1-1/4	AK49142	M8x1.25	30	.10
AK68070	AK46146	3/8-16	1-1/4	AK49146	M10x1.50	35	.10
AK68080	AK46048	1/2-13	2	AK49048	M12x1.75	50	.20
AK68090	AK46052	1/2-13	2-1/2	AK49048	M12x1.75	50	.20
AK68100	AK46043	5/8-11	3	AK49056	M16x2.00	60	.30

Hoist Ring Part No.	Rated Load (lbs)	Dia. A	B	C	D	E	F	G	R	Torque (Ft/lbs)	Wt. (lbs.)
AK68060	2,000	1-3/4	2	1	5/16	2-1/2	3/4	-	1/2	4-7	.75
AK68070	2,500	2-1/4	2-1/2	1-1/8	3/8	3-3/16	7/8	-	5/8	7-10	1.25
AK68080	5,000	2-5/8	3	1-1/2	1/2	3-7/8	1-1/8	-	3/4	20-25	2.00
AK68090	12,000	3-1/8	4	1-5/8	3/4	5-1/8	1-3/8	1-1/4	7/8	20-25	4.00
AK68100	20,000	3-5/8	5	2-1/16	1	6-3/8	1-7/8	1-1/4	1	30-35	7.50

Strong and tough! Ideal for lifting boxes or containers, as well as anchor or tiedown applications