

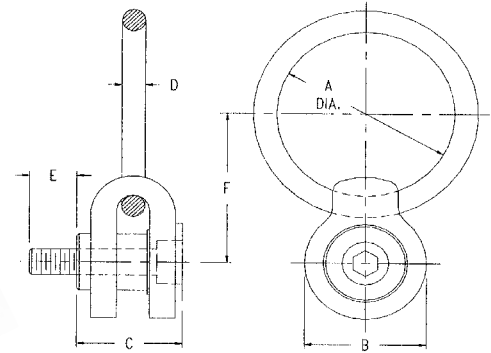
Side Load Hoist Rings Swivels 360 degrees – pivots 180 degrees

- Designed for side-mounted applications
- Extra large rings accept many styles and sizes of hoist hooks
- Material: Aircraft Quality Alloy with black oxide finish per mil spec. (cadmium plated available)
- Certified heat treatment
- 100% magnetic particle inspected
- Thread size from 5/16" to 2"
- Rated loads from 650 to 29,000 lbs.
- Safety Factor: 5:1

Smooth swiveling and pivoting action!



Ideal for stamping and injection mold industries



Inch

Part No.	Rated Load (lbs.)	Thread Size	A	B	C	D	E	F	G	Torque (Ft/lbs)	Wt. (lbs.)
AK43510	650	5/16-18	2	1-1/2	1-7/16	3/8	5/8	1-15/16	3/8	3.5	.5
AK43515	800	3/8-16	2	1-1/2	1-7/16	3/8	3/4	1-15/16	3/8	4.5	.5
AK43520	1,800	1/2-13	3	2-3/8	2-1/4	5/8	1	3	1/2	15	3.5
AK43525	2,500	5/8-11	3	2-3/8	2-1/4	5/8	1-1/4	3	1/2	25	3.5
AK43530	4,000	3/4-10	4	3-3/4	3-3/8	1	1-1/2	4-1/2	3/4	50	11.5
AK43535	5,500	7/8-9	4	3-3/4	3-3/8	1	2	4-1/2	3/4	80	11.5
AK43540	7,000	1-8	4	3-3/4	3-3/8	1	2	4-1/2	3/4	90	11.5
AK43545	14,000	1-1/4-7	6	4-5/8	4-5/8	1-3/8	2	6-1/4	1	150	28.0
AK43550	17,000	1-1/2-6	6	4-5/8	4-5/8	1-3/8	2-1/2	6-1/4	1	250	31.5
AK43555	29,000	2-4-1/2	5-1/4x10-1/2	4-5/8	6-5/8	1-1/2	3-1/8	11-1/8	1	300	42.0

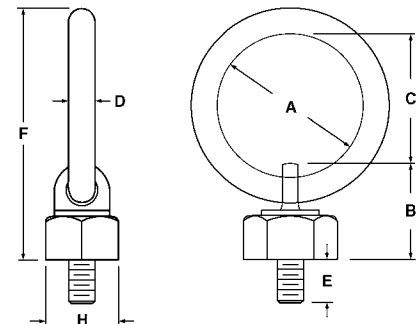
Metric

Part No.	Rated Load (Kgs)	Thread Size	A	B	C	D	E	F	G	Torque (Ft/lbs)	Wt. (lbs)
AK43560	325	M8x1.25	2	1-1/2	1-7/16	3/8	16	1-15/16	3/8	3.5	.5
AK43565	500	M10x1.50	2	1-1/2	1-7/16	3/8	20	1-15/16	3/8	4.5	.5
AK43570	725	M12x1.75	3	2-3/8	2-1/4	5/8	24	3	1/2	15	3.5
AK43575	1,400	M16x2.00	3	2-3/8	2-1/4	5/8	31	3	1/2	25	3.5
AK43580	2,290	M20x2.50	4	3-3/4	3-3/8	1	40	4-1/2	3/4	50	11.5
AK43585	3,050	M24x3.00	4	3-3/4	3-3/8	1	47	4-1/2	3/4	80	11.5
AK43590	4,850	M30x3.50	6	4-5/8	4-5/8	1-3/8	44	6-1/4	1	150	28

Large Opening Swivel & Pivot Hoist Rings Swivels 360 degrees – Pivots 180 degrees

- Die and mold makers will like the way this ring reacts to laying down and rolling the dies and molds over.
- Extra large rings accept many styles/sizes of hoist hooks
- Material: Aircraft Quality Alloy with black oxide finish per mil spec. (cadmium plated available)
- Certified heat treatment
- 100% magnetic particle inspected
- Rated loads from 800 to 10,000 lbs.
- Safety Factor: 4:1

Smooth swiveling and pivoting action!



Inch and Metric

INCH Part No.	Rated Load (lbs)	METRIC Part No.	Rated Load (lbs)	A	B	C	D	E	F	H	INCH Thread Size	METRIC Thread Size	Wt. (lbs.)
AK42620	800	AK42920	400	2	1.48	1.75	3/8	1/2	3.60	1	5/16-18	M8x1.25	.7
AK42630	1,000	AK42930	500	2	1.48	1.75	3/8	5/8	3.60	1	3/8-16	M10x1.50	.7
AK42640	2,500	AK42940	1,050	3	2.68	2.57	5/8	3/4	5.87	1-3/4	1/2-13	M12x1.75	3.0
AK42650	4,000	AK42950	1,900	3	2.68	2.57	5/8	1	5.87	1-3/4	5/8-11	M16x2.00	3.0
AK42660	7,000	AK42960	2,150	4	4.25	3.31	1	1-1/4	8.56	2-3/4	3/4-10	M20x2.50	9.5
AK42670	10,000	AK42970	4,200	4	4.25	3.31	1	1-1/2	8.56	2-3/4	1-8	M24x3.00	9.5