

Round Base Swivel & Pivot Hoist Rings

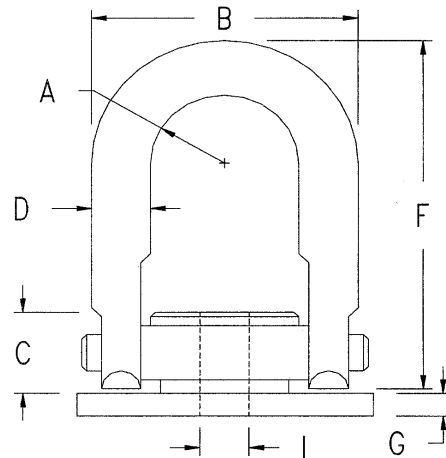
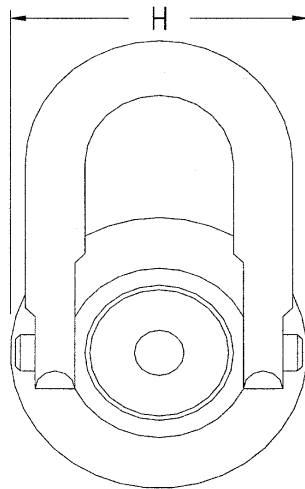
Swivels 360 degrees – Pivots 180 degrees

- Material: Aircraft Quality Alloy
- Finish: Black oxide per mil spec. (cadmium plated available)
- Safety Factor: 5:1
- Certified heat treatment
- 100% magnetic particle inspected
- Direct mounting
- Wide round base helps distribute shear loads
- Rated load capacities from 2,500 lbs. to 20,000 lbs.
- Many OEM applications
- Perfect for pre-cast concrete products: simply cast a threaded anchor or stud into the concrete part. Mount the hoist ring and you have an easy, safe lifting/handling application.



NOTE: Thread engagement should be 1-1/2 times the diameter of the equivalent of Grade 8 alloy screws.

To obtain maximum load capacity, high strength alloy screws must be used.



Part No.	Rated Load (lbs)	A	B	C	D	F	G	H	I	Thread Size	Torque Ft/lbs	Wt. (lbs.)
AK44646	2,500	0.88	3-1/4	1-7/64	3/4	6-3/4	1/4	3.5	1/2	1/2-13	28	3.5
AK44642	4,000	0.88	3-1/4	1-7/64	3/4	6-3/4	1/4	3.5	5/8	5/8-11	60	3.5
AK44654	5,000	0.88	3-1/4	1-7/64	3/4	6-3/4	1/4	3.5	3/4	3/4-10	100	3.5
AK44660	7,000	1.40	4-13/16	1-1/2	1	8-7/64	13/32	5.0	3/4	3/4-10	100	9.0
AK44656	8,000	1.40	4-13/16	1-1/2	1	8-7/64	13/32	5.0	7/8	7/8-9	160	9.0
AK44666	10,000	1.40	4-13/16	1-1/2	1	8-7/64	13/32	5.0	1	1-8	230	9.0
AK44802	15,000	1.75	6	1-7/8	1-1/4	8-3/4	1/2	7.0	1-1/4	1-1/4-7	470	17.0
AK44704	20,000	2.00	7-11/32	2	1-1/2	10-3/16	1/2	7.0	1-1/2	1-1/2-6	800	24.0