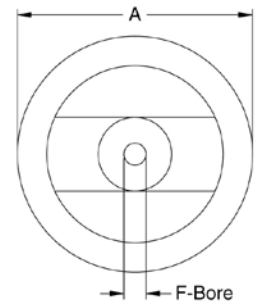
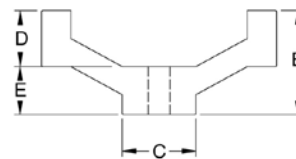


2 Spoke Plastic Hand Wheels

- Material: Matte black thermoplastic fiber reinforced
- Zinc plated steel hub
- Heat resistant up to 230F
- Anodized aluminum self adhesive center trim disc
- All wheels provided with 10mm thru pilot hole
- Smooth, radiused modern design
- Custom bores, keyways and set screws available

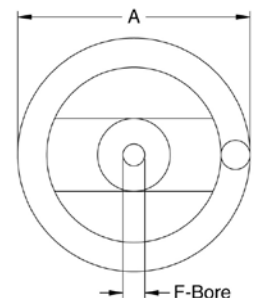
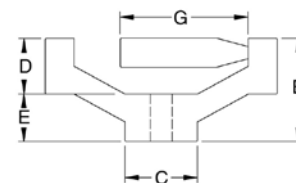
Without Handle

Part No.	A	B	C	D	E	F	Bore
70950	3.90	1.42	0.79	0.98	0.67	0.71	0.375
70951	6.30	1.97	0.98	1.57	1.06	1.02	0.500
70952	7.87	2.36	1.10	1.97	1.34	1.18	0.625



With Folding Handle

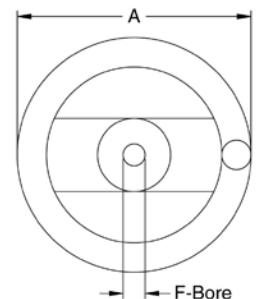
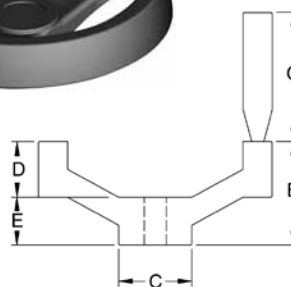
Part No.	A	B	C	D	E	F	Bore
70953	3.90	1.42	0.79	0.98	0.67	0.71	0.375
70954	6.30	1.97	0.98	1.57	1.06	1.02	0.500
70955	7.87	2.36	1.10	1.97	1.34	1.18	0.625



Supplied with thermoplastic safety style folding handle

With Revolving Handle

Part No.	A	B	C	D	E	F	Bore
70956	3.90	1.42	0.79	0.98	0.67	0.71	0.375
70957	6.30	1.97	0.98	1.57	1.06	1.02	0.500
70958	7.87	2.36	1.10	1.97	1.34	1.18	0.625



Supplied with thermoplastic revolving handle with threaded spindle