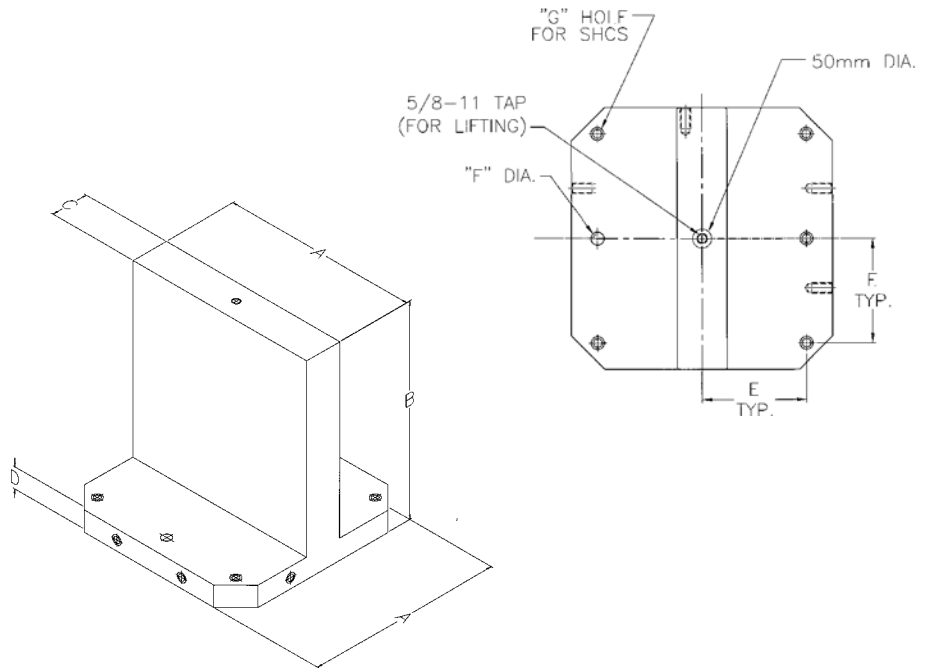


## T-Columns



### English

Part No.	A	B	C	D	E	F	G	Approx. Weight
25400	15.70	18.00	3.00	1.75	6.30	20mm	1/2" or M12	370 lbs.
25401	15.70	24.00	4.00	1.75	6.30	20mm	1/2" or M12	550 lbs.
25402	19.70	18.00	2.00	2.00	7.87	20mm	1/2" or M12	438 lbs.
25403	19.70	24.00	4.00	2.00	7.87	20mm	1/2" or M12	750 lbs.
25404	19.70	30.00	6.00	2.00	7.87	20mm	1/2" or M12	1175 lbs.
25405	24.80	24.00	4.00	2.25	9.84	25mm	5/8" or M16	1065 lbs.
25406	24.80	30.00	6.00	2.25	9.84	25mm	5/8" or M16	1595 lbs.
25407	12.60	15.50	3.00	1.50	4.96	20mm	3/8" or M10	225 lbs.

### Metric

Part No.	A	B	C	D	E	F	G	Approx. Weight
65400	400	455	80	45	160	20mm	M12 or 1/2"	370 lbs.
65401	400	610	100	45	160	20mm	M12 or 1/2"	550 lbs.
65402	500	455	50	50	200	20mm	M12 or 1/2"	438 lbs.
65403	500	610	100	50	200	20mm	M12 or 1/2"	750 lbs.
65404	500	760	150	50	200	20mm	M12 or 1/2"	1175 lbs.
65405	630	610	100	55	250	25mm	M16 or 5/8"	1065 lbs.
65406	630	760	150	55	250	25mm	M16 or 5/8"	1595 lbs.

- Provides an accurate fixturing base for workpieces on horizontal and multi-axis machining centers.
- Provide a locating and mounting base for fixture plates.
- Material: One-piece stress relieved class 40 Meehanite cast iron or equivalent.
- Base and upright thickness are milled flat, parallel, and square to .001 in 12".
- T-Columns are provided with the standard DIN and JIS mounting configuration (see page 209).
- T-Columns are plain, without a grid pattern or holes, on all four sides.
- Grid patterns, non-standard mounting configurations, and special sizes are available and will be quoted upon request. See pages 214 and 215 for T-column quotation worksheets.
- TE-CO supports these products with a full line of tooling components for your fixturing needs (pages 2-70).
- Hoist rings are also available for proper material handling (see pages 139-159).