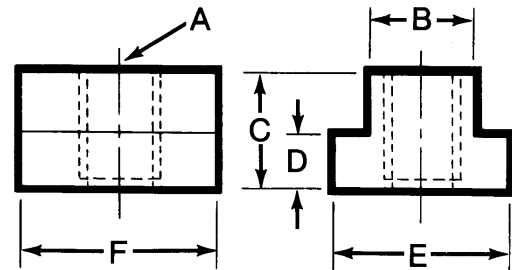
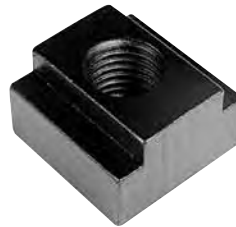


T-Slot Nuts

- Black oxide finish, case hardened
- 1018 Material
- The last thread is incomplete on T-Slot Nuts to prevent the stud from turning through the bottom of the nut.
- Many sizes conform to TCMAI standards
- Special sizes quoted upon request
- Standard package quantity:
 - 41401- 41419: 25 pcs.
 - 61401- 61413: 25 pcs.



* T-Slot Nuts are undersized to fit machine table slot

** English T-Slot Nut will fit this size metric machine T-Slot.

Inch

Part No.	Tapped Through Part No.	Thread A	*English Table Slot B	**Metric Table Slot	C	D	E	F	Wt. (lbs/ 100 pcs)
41401	41401T	1/4-20	5/16	8MM	1/4	3/16	9/16	9/16	1.7
41402	41402T	1/4-20	3/8	10MM	3/8	15/64	9/16	9/16	2.5
41403	41403T	5/16-18	3/8	10MM	3/8	1/4	5/8	7/8	4.2
41433	41433T	5/16-18	7/16	12MM	1/2	7/32	11/16	7/8	5.8
41434	41434T	5/16-18	1/2	13MM	1/2	9/32	7/8	7/8	7.7
41404	41404T	3/8-16	7/16	12MM	1/2	7/32	11/16	7/8	5.4
41405	41405T	3/8-16	1/2	12MM	1/2	9/32	7/8	7/8	7.3
41406	41406T	3/8-16	9/16	15MM	5/8	11/32	7/8	1-1/8	12.7
41407	41407T	7/16-14	1/2	13MM	1/2	9/32	7/8	7/8	6.8
41408	41408T	7/16-14	1/2	13MM	3/8	7/32	3/4	7/8	4.6
41409	41409T	1/2-13	9/16	15MM	5/8	11/32	7/8	1-1/8	11.4
41410	41410T	1/2-13	5/8	16MM	5/8	11/32	1	1-1/8	13.4
41411	41411T	1/2-13	5/8	16MM	3/4	3/8	1-1/8	1-1/8	16.9
41412	41412T	1/2-13	11/16	18MM	3/4	7/16	1-1/8	1-1/4	21.3
41413	41413T	1/2-13	3/4	20MM	3/4	15/32	1-1/4	1-1/4	24.2
41415	41415T	5/8-11	11/16	18MM	3/4	7/16	1-1/8	1-1/4	19
41416	41416T	5/8-11	3/4	20MM	3/4	15/32	1-1/4	1-1/4	22.2
41417	41417T	5/8-11	13/16	21MM	1	9/16	1-1/4	1-1/2	37
41418	41418T	3/4-10	13/16	21MM	1	9/16	1-1/4	1-1/2	33.9
41419	41419T	3/4-10	7/8	23MM	1	9/16	1-1/2	1-1/2	40.5
41420	41420T	3/4-10	1	26MM	1	5/8	1-5/8	1-3/4	57.6
41421	41421T	3/4-10	1	26MM	1-1/2	3/4	1-3/4	1-3/4	84
41422	41422T	3/4-10	1-1/16	27MM	1-1/8	11/16	1-5/8	2	76.6
41423	41423T	7/8-9	1	26MM	1	5/8	1-5/8	1-3/4	53.6
41424	41424T	7/8-9	1-1/16	27MM	1-1/8	11/16	1-5/8	2	71.2
41425	41425T	7/8-9	1-1/8	29MM	1-1/2	3/4	1-3/4	2	97.6
41429	41429T	7/8-9	1-5/16	34MM	1-1/4	15/16	2	2	109
41426	41426T	1-8	1-1/16	27MM	1-1/8	11/16	1-5/8	2	66.2
41427	41427T	1-8	1-1/8	29MM	1-1/2	3/4	1-3/4	2	91.3
41428	41428T	1-8	1-1/4	32MM	1-1/4	7/8	2	2	98.8
41430	41430T	1-8	1-5/16	34MM	1-1/4	15/16	2	2	102.5
41432	41432T	1-1/4-7	1-3/8	36MM	1-3/4	1-1/8	2-1/2	2-1/2	208.5

Continued on page 21

T-Slot Nuts (continued)

NEW Inch Sizes

Part No.	Tapped Through Part No.	Thread A	*English Table Slot B	**Metric Table Slot	C	D	E	F	Wt. (lbs/100 pcs)
41470	41470T	1/4-20	3/8	10MM	3/8	1/4	5/8	7/8	
41471	41471T	5/16-18	7/16	12MM	1/2	7/32	3/4	1	
41472	41472T	3/8-16	7/16	12MM	1/2	7/32	3/4	1	
41473	41473T	3/8-16	1/2	13MM	1/2	9/32	7/8	1	
41474	41474T	3/8-16	9/16	15MM	5/8	11/32	7/8	1	
41476	41476T	3/8-16	5/8	16MM	5/8	3/8	1	1	
41478	41478T	3/8-16	5/8	16MM	7/8	7/16	1-3/16	1-3/16	
41475	41475T	1/2-13	9/16	15MM	5/8	11/32	7/8	1	
41477	41477T	1/2-13	5/8	16MM	5/8	3/8	1	1	
41479	41479T	1/2-13	5/8	16MM	7/8	7/16	1-3/16	1-3/16	
41480	41480T	1/2-13	11/16	18MM	3/4	13/32	1-1/8	1-1/8	
41481	41481T	5/8-11	11/16	18MM	3/4	13/32	1-1/8	1-1/8	
41482	41482T	5/8-11	3/4	20MM	3/4	1/2	1-1/4	1-1/8	
41483	41483T	5/8-11	13/16	21MM	1	9/16	1-3/8	1-1/2	
41484	41484T	3/4-10	13/16	21MM	1	9/16	1-3/8	1-1/2	
41486	41486T	3/4-10	13/16	21MM	1	17/32	1-1/4	1-1/2	
41485	41485T	3/4-10	7/8	23MM	1	5/8	1-1/2	1-1/2	
41487	41487T	3/4-10	1	26MM	1-1/4	3/4	1-1/2	1-1/2	
41488	41488T	7/8-9	1	26MM	1-1/2	3/4	1-3/4	1-1/2	
41490	41490T	7/8-9	1-1/16	27MM	1-1/2	3/4	1-3/4	1-1/2	
41489	41489T	7/8-9	1-1/8	29MM	1-1/2	3/4	1-3/4	1-1/2	
41491	41491T	1-8	1-1/8	29MM	1-1/2	3/4	1-3/4	1-3/4	

Metric

Part No.	Tapped Through Part No.	Thread A	**Metric Table Slot	*English Table Slot B	C	D	E	F	Wt. (lbs/100pcs)
61401	61401T	M6 x 1.0	8MM	5/16	10	6	14	19	3
61402	61402T	M6 x 1.0	10MM	7/16	11	6	16	22	5
61403	61403T	M8 x 1.25	10MM	7/16	11	6	16	22	5
61404	61404T	M10 x 1.5	12MM	1/2	13	7	19	22	6
61405	61405T	M10 x 1.5	14MM	9/16	16	9	22	29	12
61406	61406T	M12 x 1.75	14MM	9/16	16	9	22	29	12
61407	61407T	M12 x 1.75	16MM	5/8	16	9	25	29	14
61408	61408T	M12 x 1.75	17MM	11/16	19	11	29	32	21
61409	61409T	M16 x 2.0	18MM	3/4	19	11	29	32	19
61410	61410T	M16 x 2.0	20MM	13/16	25	14	32	38	36
61411	61411T	M20 x 2.5	22MM	7/8	25	14	35	38	36
61412	61412T	M24 x 3.0	27MM	1-1/16	29	18	41	51	69
61413	61413T	M24 x 3.0	33MM	1-5/16	32	24	51	51	106

Stainless Steel T-Nuts

- 300 Stainless Steel
- The last thread is incomplete to prevent the stud from turning through the bottom of the nut.



* T-Nuts are undersized to fit machine table slot.

Part No.	Thread A	*English Table Slot B	C	D	E	F	Weight (lbs/100pcs)
47401	1/4-20	5/16	1/4	3/16	1/2	9/16	3
47403	5/16-18	3/8	3/8	1/4	5/8	7/8	6
47404	3/8-16	7/16	3/8	13/64	5/8	7/8	6.5
47405	3/8-16	1/2	1/2	9/32	7/8	7/8	9
47409	1/2-13	9/16	1/2	11/32	7/8	1-1/8	12
47410	1/2-13	5/8	5/8	11/32	1	1-1/8	15
47412	1/2-13	11/16	3/4	7/16	1	1-1/4	22
47415	5/8-11	11/16	3/4	7/16	1	1-1/4	20
47416	5/8-11	3/4	3/4	15/32	1-1/4	1-1/4	23