

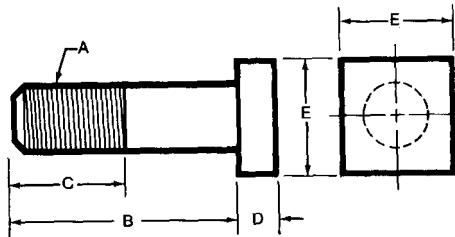
# TOOLING COMPONENTS



## Stainless Steel T-Bolts



- Material: 304 Stainless Steel
- Special lengths and sizes quoted upon request

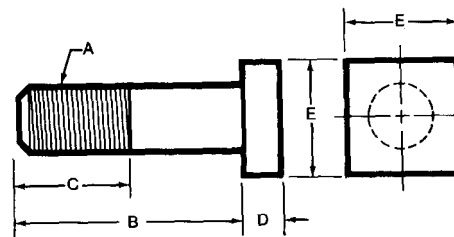


Part No.	Thread A	B	C	D	E	Table Slot	Weight (lbs/100pcs)
46480	1/2-13	1-1/2	1	5/16	7/8	1/2	15
46481	1/2-13	2	1-1/2	5/16	7/8	1/2	17
46482	1/2-13	2-1/2	2	5/16	7/8	1/2	19
46483	1/2-13	3	2	5/16	7/8	1/2	22
46484	1/2-13	4	2	5/16	7/8	1/2	28
46485	1/2-13	5	2	5/16	7/8	1/2	33
46486	1/2-13	6	2	5/16	7/8	1/2	39
46487	1/2-13	8	2	5/16	7/8	1/2	50
46580	5/8-11	2	1-1/2	13/32	1-1/8	5/8	30
46581	5/8-11	2-1/2	2	13/32	1-1/8	5/8	33
46582	5/8-11	3	2	13/32	1-1/8	5/8	38
46583	5/8-11	4	2	13/32	1-1/8	5/8	46
46584	5/8-11	5	2	13/32	1-1/8	5/8	55
46585	5/8-11	6	2	13/32	1-1/8	5/8	63
46586	5/8-11	8	2	13/32	1-1/8	5/8	82
46680	3/4-10	2-1/2	1-3/4	17/32	1-5/16	3/4	56
46681	3/4-10	3	2	17/32	1-5/16	3/4	59
46682	3/4-10	3-1/2	2	17/32	1-5/16	3/4	66
46683	3/4-10	4	2	17/32	1-5/16	3/4	68
46684	3/4-10	5	2	17/32	1-5/16	3/4	81
46685	3/4-10	6	2-1/2	17/32	1-5/16	3/4	96
46686	3/4-10	8	2-1/2	17/32	1-5/16	3/4	120

## Heavy Duty 4140 Steel T-Bolts



- Black Oxide Finish
- 4140 Steel
- Thread Class 2A UNC
- Special lengths and sizes quoted upon request



Part No.	Thread A	B	C	D	E	Table Slot	Weight (lbs/100pcs)
46260	3/8-16	1-1/2	1	1/4	11/16	3/8	7
46261	3/8-16	2	1-1/2	1/4	11/16	3/8	9
46262	3/8-16	2-1/2	2	1/4	11/16	3/8	11
46263	3/8-16	3	2	1/4	11/16	3/8	12
46264	3/8-16	3-1/2	2	1/4	11/16	3/8	13
46265	3/8-16	4	2	1/4	11/16	3/8	15
46266	3/8-16	5	2	1/4	11/16	3/8	18
46267	3/8-16	6	2	1/4	11/16	3/8	21
46460	1/2-13	1-1/2	1	5/16	7/8	1/2	14
46461	1/2-13	2	1-1/2	5/16	7/8	1/2	17
46462	1/2-13	2-1/2	2	5/16	7/8	1/2	18
46463	1/2-13	3	2	5/16	7/8	1/2	21
46464	1/2-13	3-1/2	2	5/16	7/8	1/2	24
46465	1/2-13	4	2	5/16	7/8	1/2	27
46466	1/2-13	5	2	5/16	7/8	1/2	32
46467	1/2-13	6	2	5/16	7/8	1/2	38
46468	1/2-13	7	2	5/16	7/8	1/2	43
46469	1/2-13	8	2	5/16	7/8	1/2	49
46560	5/8-11	2	1-1/2	13/32	1-1/8	5/8	29
46561	5/8-11	2-1/2	2	13/32	1-1/8	5/8	32
46562	5/8-11	3	2	13/32	1-1/8	5/8	37
46563	5/8-11	3-1/2	2	13/32	1-1/8	5/8	42
46564	5/8-11	4	2	13/32	1-1/8	5/8	45
46565	5/8-11	5	2	13/32	1-1/8	5/8	54
46566	5/8-11	6	2	13/32	1-1/8	5/8	62
46567	5/8-11	7	2	13/32	1-1/8	5/8	72
46568	5/8-11	8	2	13/32	1-1/8	5/8	81
46569	5/8-11	10	2	13/32	1-1/8	5/8	96
46660	3/4-10	3	2	17/32	1-5/16	3/4	58
46661	3/4-10	3-1/2	2	17/32	1-5/16	3/4	65
46662	3/4-10	4	2	17/32	1-5/16	3/4	67
46663	3/4-10	5	2	17/32	1-5/16	3/4	80
46664	3/4-10	6	2	17/32	1-5/16	3/4	94
46665	3/4-10	7	2	17/32	1-5/16	3/4	106
46666	3/4-10	8	2	17/32	1-5/16	3/4	118
46667	3/4-10	10	2	17/32	1-5/16	3/4	144