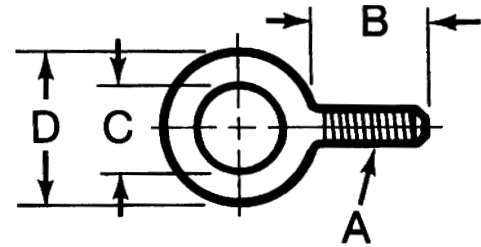


## Plain Forged Eye Bolts

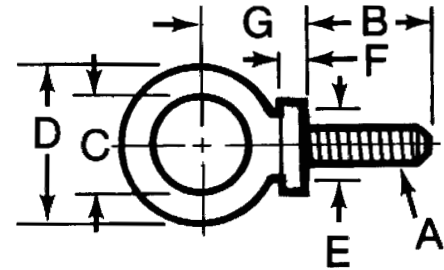
- C1030 Material
- Hot Forged
- For safe working load rating and breaking strength information, see table below.



Part No.	Thread A	B	C	D	Weight (lbs/100pcs)
<b>43102</b>	3/8-16	1-1/4	1	1-21/32	15
<b>43103</b>	1/2-13	1-1/2	1-3/16	2-1/16	25
<b>43104</b>	5/8-11	1-3/4	1-3/8	2-1/2	56
<b>43105</b>	3/4-10	2	1-1/2	2-13/16	94

## Shoulder Forged Eye Bolts

- C1030 Material
- Hot Forged
- For safe working load rating and breaking strength information, see table below.



Part No.	Thread A	B	C	D	E	F	G	Weight (lbs/100pcs)
<b>43202</b>	3/8-16	1-1/4	1	1-21/32	11/16	3/16	1-3/16	18
<b>43203</b>	1/2-13	1-1/2	1-3/16	2-1/16	7/8	1/4	1-13/32	35
<b>43204</b>	5/8-11	1-3/4	1-3/8	2-1/2	1-1/8	1/4	1-11/16	75
<b>43205</b>	3/4-10	2	1-1/2	2-13/16	1-1/4	5/16	1-13/16	101

## Standard Eyebolt Rated Capacity

Eye Bolt Size	Plain Part No.	Shoulder Part No.	Safe Working Load	Breaking Strength
3/8"	43102	43202	1,300 lbs.	6,300 lbs.
1/2"	43103	43203	2,400 lbs.	12,000 lbs.
5/8"	43104	43204	4,000 lbs.	20,000 lbs.
3/4"	43105	43205	5,000 lbs.	25,000 lbs.

Rated capacity is for **STRAIGHT LIFTS** – angle lifts should be avoided. If using angle lifts, **SHOULDER EYEBOLTS** are recommended and **MUST BE USED WITH A STEEL WASHER** so they seat on the shoulder at all times. **Load limits are reduced by 75% on angle lifts.**

Also see our selection of hoist rings, pages 140-159.