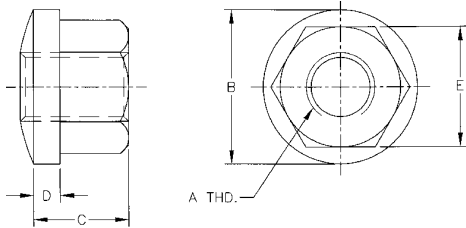


Spherical Flange Nuts

Stainless Steel

- Nut: 303 Stainless Steel
- Equalizes thread loads when used with Spherical Washers

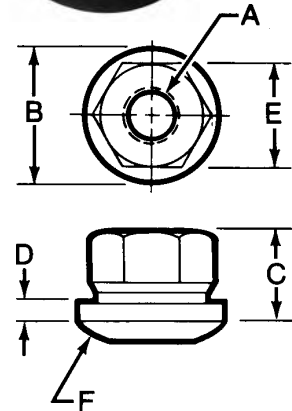


Part No.	Thread A	B	C	D	E	F	Weight (lbs/100pcs)
41821	1/4-20	5/8	5/16	3/32	1/2	3/4	2
41822	5/16-18	3/4	3/8	3/32	9/16	1	4
41823	3/8-16	7/8	1/2	1/8	11/16	1-1/4	6
41824	1/2-13	1-1/8	11/16	5/32	7/8	1-1/2	8
41825	5/8-11	1-3/8	13/16	3/16	1-1/16	1-3/4	13
41826	3/4-10	1-5/8	1	1/4	1-1/4	2-1/4	20

For spherical washers, see pgs. 28-29

Steel

- Black Oxide Finish and Case Hardened
- 12L14 Material
- Many sizes conform to TCMAI standards
- When used with Spherical Washers Flange Nuts will equalize thread loads
- Standard package quantity:
41801- 41807: 25 pcs.



Part No.	Thread A	B	C	D	E	F	Weight (lbs/100pcs)
41801	1/4-20	5/8	5/16	3/32	1/2	3/4	2
41802	5/16-18	3/4	3/8	1/8	9/16	1-1/4	4
41803	3/8-16	7/8	1/2	1/8	11/16	1-1/4	6
41804	7/16-14	1	9/16	5/32	3/4	1-1/2	8
41805	1/2-13	1-1/8	11/16	3/16	7/8	1-1/2	13
41806	5/8-11	1-3/8	13/16	3/16	1-1/16	1-3/4	20
41807	3/4-10	1-5/8	1	1/4	1-1/4	2-1/4	34
41808	7/8-9	1-3/4	1-1/8	1/4	1-7/16	2-1/2	45
41809	1-8	2	1-1/4	1/4	1-5/8	2-3/4	65
41811	1-1/4-7	2-1/2	1-1/4	1/4	1-13/16	3	76

Spherical Flange Nut Assemblies

- Assemblies consist of Flange Nuts (Part Nos. 41801-41811) and Spherical Washers (Part Nos. 42741-42750)

For material information, see individual components



Part No.	Thread Size	Total Degree of Rotation	Weight (lbs/100pcs)
41901	1/4-20	5	3
41902	5/16-18	5	6
41903	3/8-16	3	8
41904	7/16-14	4	11
41905	1/2-13	2	16
41906	5/8-11	2	25
41907	3/4-10	2	43
41908	7/8-9	3	56
41909	1-8	3	77
41911	1-1/4-7	3	104

Stainless Steel Spherical Flange Nut Assemblies

- Assemblies consist of 1 Stainless Steel Flange Nut (Part Nos. 41821-41826) and 1 Female Spherical Washer (Part Nos. 47741-47745)

For material information, see individual components



Part No.	Thread Size	Total Degree of Rotation	Weight (lbs/100pcs)
41921	1/4-20	5	3
41922	5/16-18	5	6
41923	3/8-16	3	8
41924	1/2-13	2	11
41925	5/8-11	2	16
41926	3/4-10	2	25