

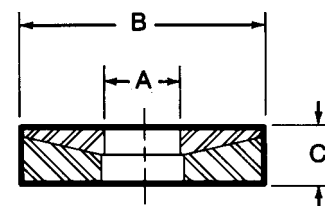
Spherical Washers – Steel

- Black Oxide Finish
- Case Hardened
- Material: 12L14 steel
- Tops and bottoms also sold separately
- Reduces stress on threads
- Bottom Washer can be used with Spherical Flange Nuts
- Compensates for slight misalignment between the workpiece and strap clamp
- Many sizes conform to TCMAI standards
- Special sizes quoted upon request



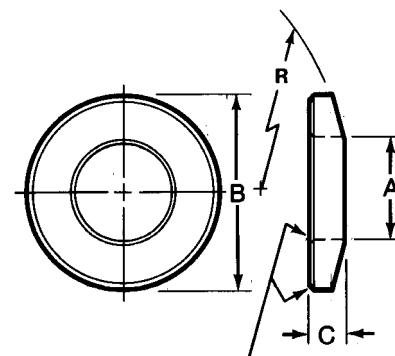
Assemblies

Steel Part No.	Male Part No. A	Female Part No. B	Stud Size	Ref. C	Total Degree of Rotation	Weight (lbs/100pcs)
42701	42721	42741	3/16 and 1/4	3/16	8 and 5	1
42702	42722	42742	5/16 and 3/8	1/4	5 and 3	4
42703	42723	42743	7/16 and 1/2	5/16	4 and 2	8
42704	42724	42744	5/8	5/16	2	10
42705	42725	42745	3/4	3/8	3	17
42706	42726	42746	7/8	3/8	3	18
42707	42727	42747	1	1/2	3	34
42708	42728	42748	1-1/8	1/2	3	38
42709	42729	42749	1-1/4	1/2	3	50
42710	42730	42750	1-1/2	1/2	3	80



Male (Top) Spherical Washers

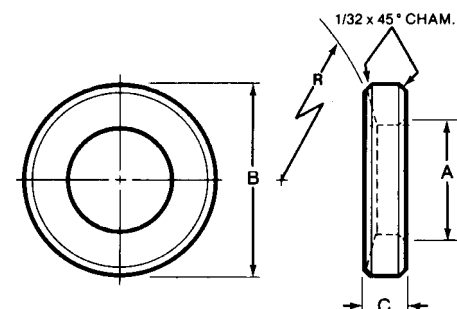
Steel Part No.	Stud Size	A	B	+0.000 -0.005 C	Rad. R	Total Weight (lbs/100pcs)
42721	3/16 and 1/4	9/32	5/8	.120	3/4	1
42722	5/16 and 3/8	13/32	7/8	.130	1-1/4	1
42723	7/16 and 1/2	17/32	1-1/8	.188	1-1/2	3
42724	5/8	21/32	1-3/8	.188	1-3/4	4
42725	3/4	25/32	1-5/8	.219	2-1/4	7
42726	7/8	15/16	1-3/4	.240	2-1/2	9
42727	1	1-1/16	2	.330	2-3/4	17
42728	1-1/8	1-3/16	2-1/4	.281	3	16
42729	1-1/4	1-5/16	2-1/2	.312	3	22
42730	1-1/2	1-9/16	2-7/8	.350	3	28



1/32 x 45° CHAM.

Female (Bottom) Spherical Washers

Steel Part No.	Stud Size	A	B	+0.000 -0.005 C	Rad. R	Total Weight (lbs/100pcs)
42741	3/16 and 1/4	5/16	5/8	.120	3/4	1
42742	5/16 and 3/8	7/16	7/8	.156	1-1/4	2
42743	7/16 and 1/2	9/16	1-1/8	.188	1-1/2	3
42744	5/8	11/16	1-3/8	.219	1-3/4	5
42745	3/4	13/16	1-5/8	.265	2-1/4	10
42746	7/8	1	1-3/4	.240	2-1/2	9
42747	1	1-1/8	2	.290	2-3/4	14
42748	1-1/8	1-1/4	2-1/4	.350	3	22
42749	1-1/4	1-3/8	2-1/2	.375	3	28
42750	1-1/2	1-5/8	2-7/8	.390	3	35



1/32 x 45° CHAM.