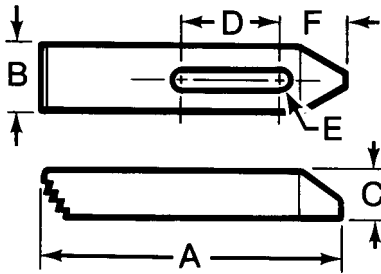


TOOLING COMPONENTS



Serrated End Clamps

- Material: 1018 Steel
- Case Hardened
- Black Oxide Finish
- Used when a workpiece fixture incorporates Step Blocks into the design
- Serrated teeth match all TE-CO Step Blocks



English

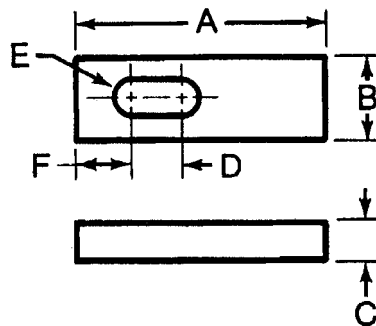
Part No.	A	B	C	D	Stud Size E	F	Weight (lbs/100pcs)
30501	2-1/2	1	1/2	13/16	1/4, 5/16 or 3/8	27/32	23
30502	4	1	5/8	1-7/16	1/4, 5/16 or 3/8	1-1/32	49
30503	6	1-1/8	3/4	2-3/16	1/4, 5/16 or 3/8	1-5/32	106
30504	2-1/2	1-1/8	1/2	11/16	1/2	29/32	27
30505	4	1-1/4	3/4	1-5/16	1/2	1-5/32	72
30506	6	1-1/4	7/8	2-1/16	1/2	1-9/32	134
30507	2-1/2	1-1/4	5/8	9/16	5/8	31/32	33
30508	4	1-1/2	3/4	1-3/16	5/8	1-9/32	87
30509	6	1-1/2	7/8	1-15/16	5/8	1-13/32	160
30510	4	1-1/2	3/4	1-1/16	3/4	1-11/32	81
30511	6	1-1/2	1	1-15/16	3/4	1-15/32	170
30512	8	1-3/4	1-1/8	2-3/16	3/4	1-29/32	330
30513	6	2	1-1/4	1-11/16	7/8 or 1	1-27/32	275
30514	8	2	1-3/8	1-15/16	7/8 or 1	2-1/32	440
30515	10	2	1-1/2	2-15/16	7/8 or 1	2-1/32	601

Metric Dimensions in millimeters

Part No.	A	B	C	D	Stud Size E	F	Wt. (lbs/100pcs)
30501M	64	25	13	21	M6-M8-M10	21	23
30502M	102	25	16	37	M6-M8-M10	26	49
30503M	152	29	19	56	M6-M8-M10	29	106
30504M	64	29	13	18	M12	23	27
30505M	102	32	16	33	M12	29	72
30506M	152	32	19	52	M12	29	134
30507M	64	32	16	14	M16	25	33
30508M	102	38	19	30	M16	31	87
30509M	152	38	22	49	M16	34	160
30510M	102	38	19	27	M20	33	81
30511M	152	38	25	49	M20	37	170
30512M	203	45	29	56	M20	48	330
30513M	152	51	32	43	M24	44	275
30514M	203	51	35	49	M24	52	440
30515M	254	51	38	75	M24	52	601

Soft Clamps

- Material: Mild Steel for easy modification
- Black Oxide Finish



Part No.	A	B	C	D	Stud Size E	F	Wt. (lbs/100pcs)
30701	6	1-1/8	3/4	2	5/16 or 3/8	1-5/32	120
30702	6	1-1/2	3/4	2	1/2	1-7/32	160
30703	6	1-1/2	7/8	2	5/8	1-9/32	179
30704	6	1-1/2	1	2	3/4	1-11/32	194