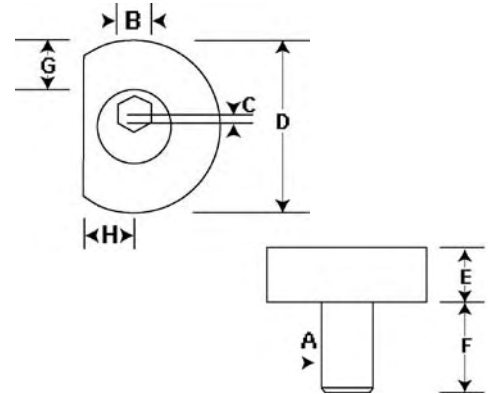


Machinable Fixture Clamps



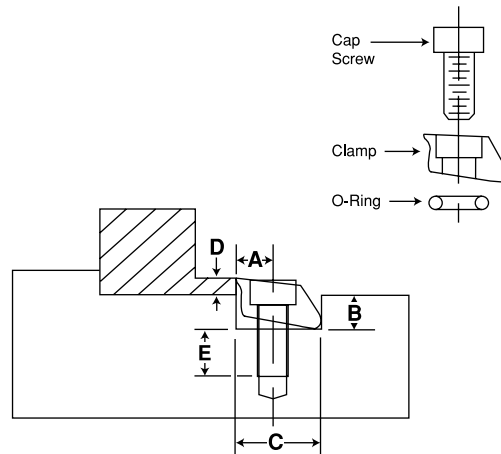
- Machinable steel washers provide more flexibility for holding round or unusual shape parts.
- Parts can be held directly to the fixture plate surface or elevated for through drilling.
- Special screw provided to hold the washer in the proper place during machining.
- Low Profile
- Made of mild steel for machinability

Part No.	Max. Holding Force Lbs.	Clamps Per Pack	A	B	C	D	E	F	G*	H***
35320	800 lbs.	4**	1/4-20	1/8	0.40	.980	.250	.470	.250	.312
35321	2000 lbs.	4**	3/8-16	3/16	0.50	1.23	.350	.710	.275	.406
35322	4000 lbs.	4**	1/2-13	5/16	.100	1.48	.450	.900	.300	.500
35323	6000 lbs.	4**	5/8-11	3/8	.100	1.73	.550	1.125	.350	.593

* "G" is the amount of machinable stock.
 ** Every package includes one machining screw.
 ***"H" is the distance from edge of workpiece to drill & tap hole.

Pitbull™ Clamps

- Extremely low bite
- Positive down force
- High resistance to rip-out
- Simple, sturdy, high quality design and components
- Available in several sizes and three styles



*Trademark of the Pitbull Company, Inc.

Part No.	Description	Clamp Width	Screw Size	Max. Holding Force Lbs.	Torque (in./lbs.)	Total Throw	Clamps Per Pkg.	A*	B	C	D	E
35200	Tool Steel, Knife Edge	.375	4-40	650 lbs.	16	.0075	8	.150	.140	.375	.075	.260
35201	Tool Steel, Blunt Edge	.375	4-40	650 lbs.	16	.0075	8	.150	.140	.375	.075	.260
35202	Brass, Blunt Edge	.375	4-40	200 lbs.	5	.0075	8	.150	.140	.375	.075	.220
35203	Tool Steel, Knife Edge	.500	8-32	1500 lbs.	50	.016	8	.200	.187	.500	.100	.390
35204	Tool Steel, Blunt Edge	.500	8-32	1500 lbs.	50	.016	8	.200	.187	.500	.100	.390
35205	Brass, Blunt Edge	.500	8-32	400 lbs.	25	.016	8	.200	.187	.500	.100	.340
35206	Tool Steel, Knife Edge	.750	1/4-20	3600 lbs.	200	.024	6	.300	.280	.750	.150	.570
35207	Tool Steel, Blunt Edge	.750	1/4-20	3600 lbs.	200	.024	6	.300	.280	.750	.150	.570
35208	Brass, Blunt Edge	.750	1/4-20	950 lbs.	50	.024	6	.300	.280	.750	.150	.440
35209	Tool Steel, Knife Edge	1.00	3/8-16	6000 lbs.	360	.050	4	.400	.450	1.00	.250	.710
35210	Tool Steel, Blunt Edge	1.00	3/8-16	6000 lbs.	360	.050	4	.400	.450	1.00	.250	.710
35211	Tool Steel, Knife Edge	1.50	1/2-13	12000 lbs.	1300	.075	2	.600	.640	1.50	.375	1.200
35212	Tool Steel, Blunt Edge	1.50	1/2-13	12000 lbs.	1300	.075	2	.600	.640	1.50	.375	1.200

*D: Clamp height