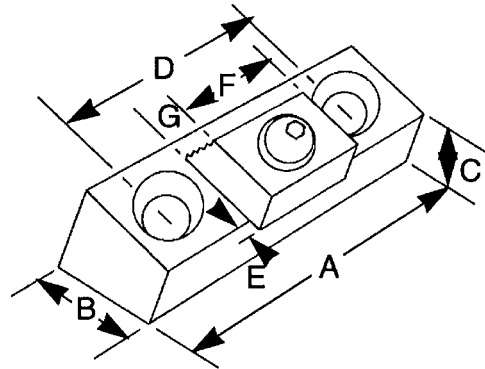
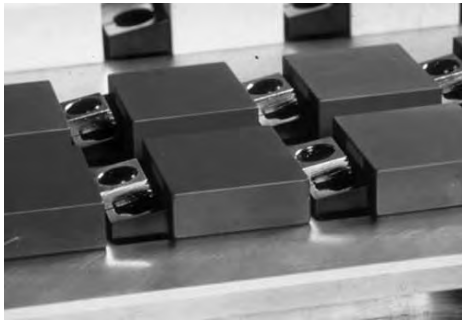


Compact Toe Clamp



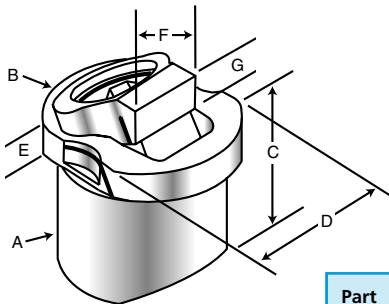
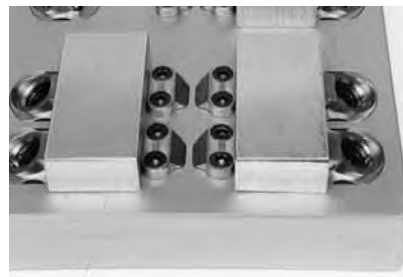
- Positive down force
- Cam action
- Clamp base should be installed in a slot to retain location
- Mounting screws included
- Available in three sizes
- Clamps can be used in series
- Clamp base provides for higher clamping – height is determined by depth of slot

| Part No. | Cam Screw | Total Distance of Movement | Key Size | Mounting Screws | A | B | C | D | E* | F | G |
|----------|-----------|----------------------------|----------|---------------------|------|------|-----|------|------|------|-----|
| 35230 | MB-6 | .050 | 3/16 | 5/16-18 x 3/4 LH | 1.70 | .75 | .50 | 1.00 | .090 | .75 | .25 |
| 35231 | MB-8 | .100 | 5/16 | 3/8-16 x 3/4 LH | 2.12 | 1.00 | .45 | 1.32 | .110 | 1.00 | .38 |
| 35232 | MB-10 | .100 | 3/8 | 1/2-13 x 1 1/4 SHCS | 2.95 | 1.50 | .99 | 2.00 | .130 | 1.50 | .50 |

**E* is the distance needed between the front of the clamp base & the workpiece.

Dyna-Force Clamp

- Incredible clamping and hold down power
- Low profile, compact design
- High quality stainless steel construction
- Easy to install
- Smooth or serrated
- Available in five sizes



| Part No. | Clamp Travel | Drive Screw | Key Size | Clamp Jaw** & Hardness | A* | B | C | D | E | F | Min G | Opt G | Max G |
|----------|--------------|-------------|----------|------------------------|-------|-------|-------|-------|------|-------|-------|-------|-------|
| 35240 | 2.0 | 6mm | 5mm | smooth 34RC | 20.00 | 24.90 | 19.00 | 19.90 | 4.50 | 13.50 | 3.25 | 5.00 | 6.75 |
| 35241 | 2.0 | 6mm | 5mm | serrated 44RC | 20.00 | 24.90 | 19.00 | 19.90 | 4.50 | 13.50 | 3.25 | 5.00 | 6.75 |
| 35242 | 2.2 | 8mm | 6mm | smooth 34RC | 25.00 | 29.90 | 24.00 | 24.90 | 5.00 | 15.00 | 4.50 | 6.50 | 8.35 |
| 35243 | 2.2 | 8mm | 6mm | serrated 44RC | 25.00 | 29.90 | 24.00 | 24.90 | 5.00 | 15.00 | 4.50 | 6.50 | 8.35 |
| 35244 | 3.8 | 10mm | 8mm | smooth 34RC | 30.00 | 37.90 | 29.00 | 29.90 | 7.00 | 20.00 | 4.50 | 7.50 | 10.75 |
| 35245 | 3.8 | 10mm | 8mm | serrated 44RC | 30.00 | 37.90 | 29.00 | 29.90 | 7.00 | 20.00 | 4.50 | 7.50 | 10.75 |

**A* is body diameter

**Smooth jaw only will have relief cut