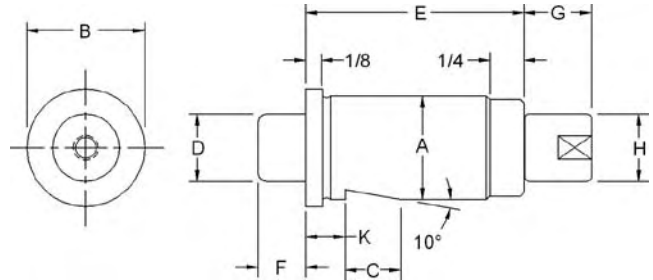


Straight Index Plungers Finished and Unfinished Ground

- For material information, contact TE-CO
- Many sizes conform to TCMAI standards
- Bushing not included – order separately (see below)



Finished Ground

| Part No. | A* | B | C | D | E | F | G | H | J | K | Lbs.** | Use with Bushing No. | Wt. (lbs/100 pcs) |
|----------|---------------|--------|-------|-------|-------|-------|-----|-------|------|------|--------|----------------------|-------------------|
| 54910 | .7518/.7515 | 7/8 | 7/16 | 1/2 | 1-3/8 | 23/64 | 1/2 | 1/2 | 1/8 | 5/16 | 22 | 54980 | 22 |
| 54912 | 1.1268/1.1265 | 1-1/4 | 9/16 | 3/4 | 2 | 33/64 | 3/4 | 3/4 | 1/8 | 3/8 | 55 | 54982 | 69 |
| 54914 | 1.5022/1.5018 | 1-5/8 | 11/16 | 1 | 2-1/4 | 5/8 | 1 | 15/16 | 1/8 | 7/16 | 90 | 54984 | 139 |
| 54916 | 2.0023/2.0019 | 2-3/16 | *** | 1-3/8 | 3 | 27/32 | 1 | 15/16 | 3/16 | *** | 150 | 54986 | 300 |

Unfinished Ground

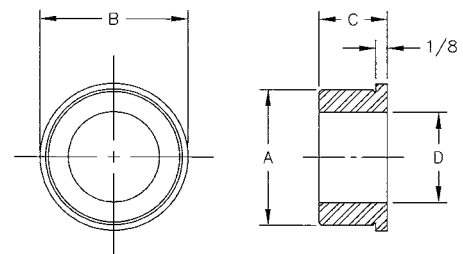
| Part No. | A* | B | C | D | E | F | G | H | J | K | Lbs.** | Use with Bushing No. | Wt. (lbs/100 pcs) |
|----------|-------------|--------|-------|-------|-------|-------|-----|-------|------|------|--------|----------------------|-------------------|
| 54911 | .770/.765 | 7/8 | 7/16 | 1/2 | 1-3/8 | 23/64 | 1/2 | 1/2 | 1/8 | 5/16 | 22 | 54981 | 22 |
| 54913 | 1.145/1.140 | 1-1/4 | 9/16 | 3/4 | 2 | 33/64 | 3/4 | 3/4 | 1/8 | 3/8 | 55 | 54983 | 69 |
| 54915 | 1.520/1.515 | 1-5/8 | 11/16 | 1 | 2-1/4 | 5/8 | 1 | 15/16 | 1/8 | 7/16 | 90 | 54985 | 139 |
| 54917 | 2.020/2.015 | 2-3/16 | *** | 1-3/8 | 3 | 27/32 | 1 | 15/16 | 3/16 | *** | 150 | 54987 | 300 |

- *For proper installation use nominal drill diameter
- **Approximate poundage required to completely retract plunger
- ***Whistle notch not included for this part number

Straight Index Bushings Finished and Unfinished Ground

Finished Ground

| Part No. | A* | B | C | D | J | Wt. (lbs/100 pcs) |
|----------|---------------|--------|-----|-------|------|-------------------|
| 54980 | .7518/.7515 | 7/8 | 1/2 | 1/2 | 1/8 | 4 |
| 54982 | 1.1268/1.265 | 1-1/4 | 5/8 | 3/4 | 1/8 | 10 |
| 54984 | 1.5022/1.5018 | 1-5/8 | 3/4 | 1 | 1/8 | 22 |
| 54986 | 2.0023/2.0019 | 2-3/16 | 1 | 1-3/8 | 3/16 | 50 |



Unfinished Ground

| Part No. | A* | B | C | D | J | Wt. (lbs/100 pcs) |
|----------|-------------|--------|-----|-------|------|-------------------|
| 54981 | .770/.765 | 7/8 | 1/2 | 1/2 | 1/8 | 4 |
| 54983 | 1.145/1.140 | 1-1/4 | 5/8 | 3/4 | 1/8 | 10 |
| 54985 | 1.520/1.515 | 1-5/8 | 3/4 | 1 | 1/8 | 22 |
| 54987 | 2.020/2.015 | 2-3/16 | 1 | 1-3/8 | 3/16 | 50 |

- *For proper installation use nominal drill diameter