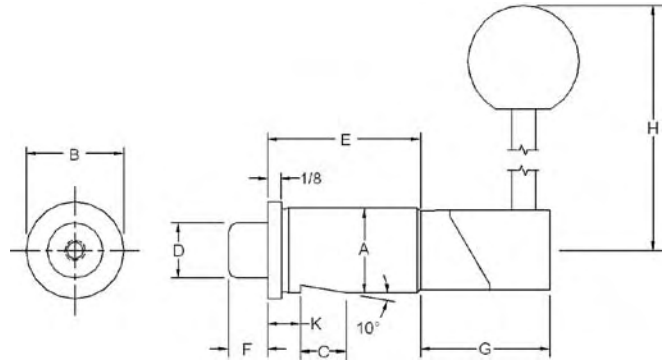


Rotary Cam Operated Straight Index Plungers Finished and Unfinished Ground



- For material information, contact TE-CO
- Many sizes conform to TCMAI standards
- Bushing not included – see page 53
- Rotary cam allows for quick horizontal motion

Finished Ground

Part No.	A*	B	C	D	E	F	G	H	J	K	Use with Bushing No.	Wt. (lbs/100 pcs)
54940	.7518/.7515	7/8	7/16	1/2	1-3/8	23/64	1-1/8	3	1/8	5/16	54980	35
54942	1.1268/1.1265	1-1/4	9/16	3/4	2	33/64	1-1/2	3-1/2	1/8	3/8	54982	92
54944	1.5022/1.5018	1-5/8	11/16	1	2-1/4	5/8	1-7/8	4-1/2	1/8	7/16	54984	185
54946	2.0023/2.0019	2-3/16	**	1-3/8	3	27/32	2-1/8	5-3/4	3/16	**	54986	418

Unfinished Ground

Part No.	A*	B	C	D	E	F	G	H	J	K	Use with Bushing No.	Wt. (lbs/100 pcs)
54941	.770/.765	7/8	7/16	1/2	1-3/8	23/64	1-1/8	3	1/8	5/16	54981	35
54943	1.145/1.140	1-1/4	9/16	3/4	2	33/64	1-1/2	3-1/2	1/8	3/8	54983	92
54945	1.520/1.515	1-5/8	11/16	1	2-1/4	5/8	1-7/8	4-1/2	1/8	7/16	54985	185
54947	2.020/2.015	2-3/16	**	1-3/8	3	27/32	2-1/8	5-3/4	3/16	**	54987	418

- *For proper installation use nominal drill diameter
 **Whistle notch not included for this part number