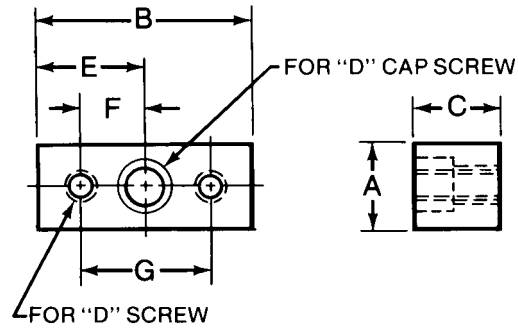


TOOLING COMPONENTS



Precision Fixture Keys

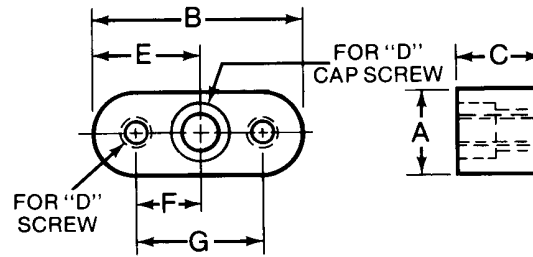
- Material: 1018 Steel
- Black Oxide Finish
- Case Hardened
- Precision Ground
- Use to accurately align fixture on machine table



Part No.	+0.0002 -0.0002 A	B	C	D	E	F	G	Wt. (lbs/100 pcs)
44530	0.3748	15/16	3/8	10-24	15/32	9/32	9/16	3
44531	0.4998	1-1/4	1/2	1/4-20	5/8	3/8	3/4	6
44532	0.6248	1-9/16	5/8	1/4-20	25/32	31/64	15/16	13
44533	0.7498	1-7/8	3/4	5/16-18	15/16	9/16	1-1/8	24
44534	0.9998	2-1/2	1	5/16-18	1-1/4	3/4	1-1/2	55

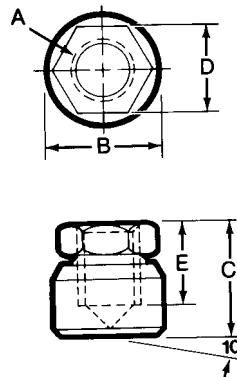
Radius End Precision Fixture Keys

- Material: 1018 Steel
- Black Oxide Finish
- Case Hardened
- Precision Ground
- Use to accurately align fixture on machine table



Part No.	+0.0002 -0.0002 A	B	C	D	E	F	G	Wt. (lbs/100 pcs)
44540	0.3748	15/16	3/8	10-24	15/32	9/32	9/16	2
44541	0.4998	1-1/4	1/2	1/4-20	5/8	3/8	3/4	5
44542	0.6248	1-9/16	5/8	1/4-20	25/32	31/64	15/16	12
44543	0.7498	1-7/8	3/4	5/16-18	15/16	9/16	1-1/8	21
44544	0.9998	2-1/2	1	5/16-18	1-1/4	3/4	1-1/2	50

Toggle Pads



- Material: 12L14 Steel
- Black Oxide Finish or Zinc Plate Yellow Chromate Finish
- Case Hardened
- Many sizes conform to TCMAI standards.
- Pads swivel 10 degrees from vertical in any direction
- Assures positive gripping
- Use when high clamping pressures are required

Black Part No.	Yellow Part No.	Thread A	B	C	D	E	Weight (lbs/100pcs)
44302	44362	1/4-20	5/8	5/8	1/2	13/32	4
44303	44363	5/16-18	11/16	11/16	9/16	7/16	5
44304	44364	3/8-16	3/4	3/4	5/8	1/2	6
44305	44365	1/2-13	7/8	1	3/4	17/32	10
44306	44366	5/8-11	1	1-1/16	7/8	9/16	16
44307	44367	3/4-10	1-1/4	1-5/16	1-1/16	3/4	25
44308	44368	1-8	1-5/8	1-11/16	1-3/8	1	60