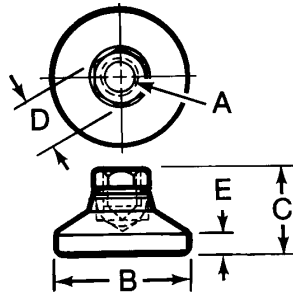


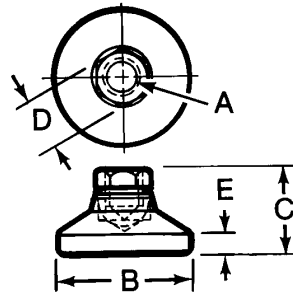
Leveling Pads



- Material: 12L14 Steel
- Black Oxide Finish
- Case Hardened
- Many sizes conform to TCMAI standards
- Pads swivel 10 degrees from vertical in any direction
- Large pad diameter provides solid support
- Use as a foot for machine tools, branches, electronic racks, etc.
- Special sizes quoted upon request

Part No.	Thread A	B	C	D	E	Load Limits	Weight (lbs/100pcs)
44401	3/8-16	1-1/4	7/8	5/8	3/16	3750 lbs.	14
44402	1/2-13	1-7/8	1-1/8	3/4	1/4	5000 lbs.	47
44403	5/8-11	2-1/2	1-1/4	7/8	5/16	6000 lbs.	67
44404	3/4-10	3	1-1/2	1-1/16	1/2	7200 lbs.	138

Zinc Plated Leveling Pads

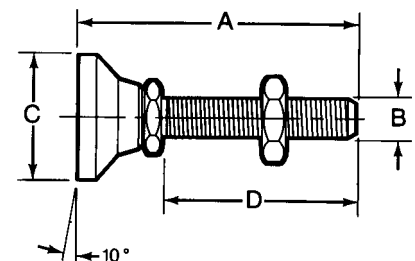


- Material: 12L14 Steel with Zinc Plate Yellow Chromate Finish
- Many sizes conform to TCMAI standards
- Pads swivel 10 degrees from vertical in any direction
- Large pad diameter provides solid support
- Use as a foot for machine tools, benches, electronic racks, etc.
- Special sizes quoted upon request

Part No.	Thread A	B	C	D	E	Load Limits	Weight (lbs/100pcs)
44431	3/8-16	1-1/4	7/8	5/8	3/16	3750 lbs.	14
44432	1/2-13	1-7/8	1-1/8	3/4	1/4	5000 lbs.	47
44433	5/8-11	2-1/2	1-1/4	7/8	5/16	6000 lbs.	67
44434	3/4-10	3	1-1/2	1-1/16	1/2	7200 lbs.	138

Leveling Pad & Stud Assembly

- Material: 12L14 Steel with Zinc Plating
- Zinc coating deters rust
- Integral stud and hardened ball swivels 10 degrees from vertical in any direction.
- Swivel action facilitates leveling of machine tools, benches, electronic racks, etc. – even on rough surfaces



Part No.	A	Thread B	C	D	Load Limits	Weight (lbs/100pcs)
44450	2-7/8	3/8-16	1-1/4	2-1/32	3750 lbs.	22
44451	3-1/8	1/2-13	1-7/8	1-31/32	5000 lbs.	54
44452	3-1/4	5/8-11	2-1/2	1-15/16	6000 lbs.	102
44453	3-1/2	3/4-10	3	1-31/32	7200 lbs.	184