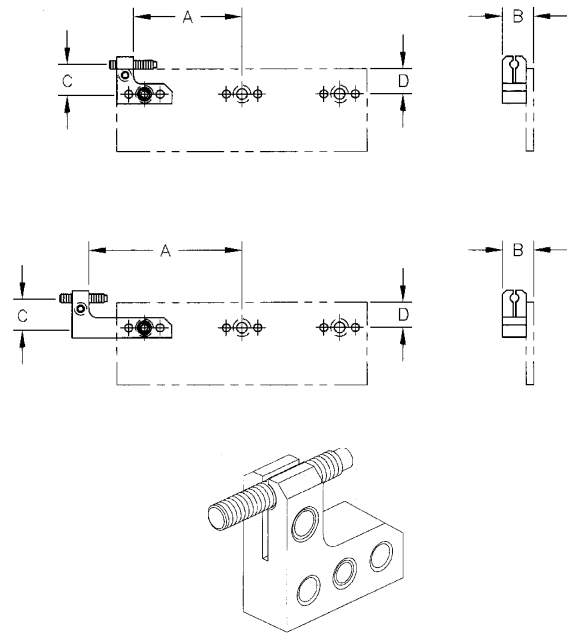


## AccuSnap Modular Workstops



- Ideal for off-line set-up applications.
- Provides extremely accurate workpiece location and repeatability when used in conjunction with the Accu-Snap modular workstop presetting gage (page 183).
- Designed to be used with the AccuSnap parallel sets (pages 178-179).
- The AccuSnap modular workstop is attached by inserting the locating dowel pin into desired stop location on face of parallel. Secure the workstop by tightening supplied flat head cap screw.

Vise Size	Part Number		A	B	C	D
	Right Hand	Left Hand				
4"	AWS4000	AWS4020	1.75	.493	.469	.28
	AWS4001	AWS4021	2.50	.493	.469	.28
	AWS4010	AWS4030	1.75	.493	.969	.28
	AWS4011	AWS4031	2.50	.493	.969	.28
6"	AWS6000	AWS6020	2.68	.493	.657	.47
	AWS6001	AWS6021	3.68	.493	.657	.47
	AWS6010	AWS6030	2.68	.493	1.157	.47
	AWS6011	AWS6031	3.68	.493	1.157	.47
8"	AWS8000	AWS8020	3.50	.618	.626	.44
	AWS8001	AWS8021	5.00	.618	.626	.44
	AWS8010	AWS8030	3.50	.618	1.126	.44
	AWS8011	AWS8031	5.00	.618	1.126	.44

## AccuSnap Spacers

- Used in conjunction with AccuSnap workstops.
- Allows spacing between the workstop and parallel.

Vise Size	Part Number	A
4"	AWS4040	.375
6"	AWS6040	.375
8"	AWS8040	.500

