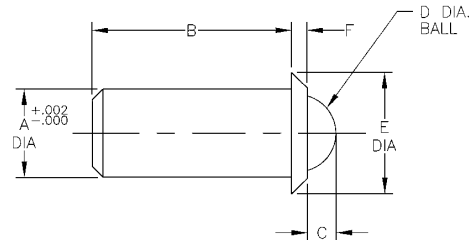


SPRING LOADED DEVICES



Press Fit Ball Plungers

- Material:
 - Steel Body: 12L14 Steel
 - Stainless Steel Body: 303 Stainless Steel
 - Ball: 440 Stainless Steel
- Black Oxide Finish – Steel Only
- Ideal for installation in softer materials, such as aluminum, wood or plastic
- Sturdy shoulder provides a fixed seating position and positively resists detent force (installation hole can be counterbored to recess the shoulder)
- Use when a threaded hole would be impractical



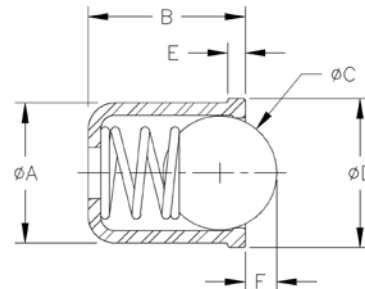
STEEL BODY		STAINLESS BODY		A	End Force (lbs)		B	C	Dia. D	Dia. E	F
Stainless Steel Ball Part No.	Nylon Ball Part No.	Stainless Steel Ball Part No.	Nylon Ball Part No.		Initial	Final					
53754	53762	53755	53780	.125	.4	1.3	.252	.035	.094	.187	.032
53756	53763	53757	53781	.125	.75	2.5	.252	.035	.094	.187	.032
53792	53794	53796	53798	.188	1.0	2.5	.39	.058	.156	.250	.040
53701	53764	53709	53782	.188	1.0	2.5	.410	.058	.156	.250	.035
53702	53766	53710	53784	.250	1.5	3.5	.480	.070	.188	.312	.044
53758	53768	53759	53786	.312	2.0	5.0	.643	.090	.250	.375	.045
53760	53769	53761	53787	.312	4.0	10.0	.643	.090	.250	.375	.045
53703	53770	53711	53788	.375	2.5	7.0	.790	.110	.312	.500	.078
53704	53772	53712	53790	.500	4.0	9.0	1.13	.161	.438	.688	.088
53793	53795	53797	53799	.188	2.0	5.0	.39	.058	.156	.250	.040
53705	53765	53713	53783	.188	2.0	5.0	.410	.058	.156	.250	.035
53706	53767	53714	53785	.250	3.0	7.0	.480	.070	.188	.312	.044
53707	53771	53715	53789	.375	5.0	14.0	.790	.110	.312	.500	.078
53708	53773	53716	53791	.500	8.0	18.0	1.13	.161	.438	.688	.088

Press Fit Ball Plungers – No Flange

- For sensitive and light duty applications
- Black thermoplastic or stainless steel body
- Ball available in plastic, steel and stainless steel



Small and lightweight!



Stainless Steel Body & Ball – Metric

Stainless Steel Part No.	End Force (Newtons)		A	B	Ball Dia. C	D	E	F
	Initial	Final						
53670	3	7	4	5	3	4,6	1	0,8
53671	4	7	5	6	4	5,6	1	1
53672	6	12	6	7	5	6,5	1	1,5
53673	6	12	8	9	6,5	8,5	1	1,8
53674	10	20	10	13,5	8	12	2,5	2,7
53675	15	25	12	16	10	14	2,5	3,5

Plastic Body, Stainless Steel Ball – Metric

Plastic Body Part No.	End Force (Newtons)		A	B	Ball Dia. C	D	E	F
	Initial	Final						
53620	3	7	4	5	3	4,6	1	0,7
53621	4	7	5	6	4	5,6	1	1
53622	6	12	6	7	5	6,5	1	1,5
53623	6	12	8	9	6,5	8,5	1	1,8
53624	10	20	10	13,5	8	12	2,5	2,7
53625	15	25	12	16	10	14	2,5	3,5

Stainless Steel Body, Plastic Ball – Metric

Stainless Steel Part No.	End Force (Newtons)		A	B	Ball Dia. C	D	E	F
	Initial	Final						
53610	3	7	4	5	3	4,6	1	0,5
53611	4	7	5	6	4	5,6	1	0,6
53612	6	12	6	7	5	6,5	1	1,1
53613	6	12	8	9	6,5	8,5	1	1,5
53614	10	20	10	13,5	8	12	2,5	2,3
53615	15	25	12	16	10	14	2,5	3,1

Plastic Body & Ball – Metric

Plastic Body Part No.	End Force (Newtons)		A	B	Ball Dia. C	D	E	F
	Initial	Final						
53616	3	7	4	5	3	4,6	1	0,9
53617	4	7	5	6	4	5,6	1	1,2
53618	6	12	6	7	5	6,5	1	1,5
53619	6	12	8	9	6,5	8,5	1	2
53628	10	20	10	13,5	8	12	2,5	2,7
53629	15	25	12	16	10	14	2,5	3,5