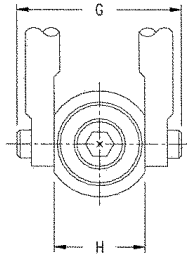
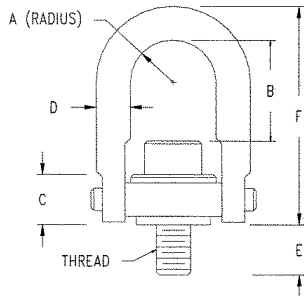


HOIST RINGS



Stainless Steel Safety Engineered Hoist Rings

Designed for safe lifting! Safety engineered hoist rings rotate and pivot to absorb any pitch, roll or sway of unbalanced loads.



- Will not yield to heavy side loads. Helps prevent lifting hook from disengaging.
- Helps protect people and material against accidents.
- For use in outdoor weather and certain chemical and corrosive environments.
- Material: 300 series stainless steel
- Safety factor: 5:1
- Liquid penetrant mil 6868

Inch

Rated Load (lbs.)	Thread Size	A	C	D	E	Standard U-Bar			Long U-Bar				Torque (Ft/lbs)	Wt. (lbs)	
						Part No.	B	F	Part No.	B	F	G			H
400	5/16-18	0.43	0.71	3/8	0.29	AK58102	1.27	2.67	-	-	-	1.84	1.00	3.5	0.3
400	5/16-18	0.43	0.71	3/8	0.54	AK58104	1.27	2.67	-	-	-	1.84	1.00	3.5	0.3
500	3/8-16	0.43	0.71	3/8	0.54	AK58106	1.27	2.67	-	-	-	1.84	1.00	6	0.3
1,250	1/2-13	0.70	0.93	1/2	1.07	AK58602	1.84	3.77	-	-	-	2.58	1.49	14	1.0
1,250	1/2-13	0.88	1.22	3/4	0.78	AK58008	2.31	4.78	AK58644	4.25	6.72	3.52	1.99	14	2.6
1,250	1/2-13	0.88	1.22	3/4	1.03	AK58010	2.31	4.78	AK58646	4.25	6.72	3.52	1.99	14	2.6
1,250	1/2-13	0.88	1.22	3/4	1.28	AK58012	2.31	4.78	AK58648	4.25	6.72	3.52	1.99	14	2.6
2,000	5/8-11	0.88	1.22	3/4	0.78	AK58002	2.18	4.78	-	-	-	3.52	1.99	30	2.6
2,000	5/8-11	0.88	1.22	3/4	1.03	AK58004	2.18	4.78	AK58640	4.12	6.72	3.52	1.99	30	2.6
2,000	5/8-11	0.88	1.22	3/4	1.28	AK58006	2.18	4.78	AK58642	4.12	6.72	3.52	1.99	30	2.6
2,500	3/4-10	0.88	1.22	3/4	1.03	AK58014	2.06	4.78	AK58650	4.00	6.72	3.52	1.99	50	3.0
2,500	3/4-10	0.88	1.22	3/4	1.53	AK58018	2.06	4.78	AK58654	4.00	6.72	3.52	1.99	50	3.0
3,500	3/4-10	1.40	1.71	1	1.04	AK58204	3.06	6.52	AK58658	4.65	8.11	5.14	3.00	50	7.0
3,500	3/4-10	1.40	1.71	1	1.54	AK58206	3.06	6.52	AK58660	4.65	8.11	5.14	3.00	50	7.0
4,000	7/8-9	1.40	1.71	1	1.04	AK58202	2.93	6.52	AK58656	4.52	8.11	5.14	3.00	80	7.0
4,000	7/8-9	1.40	1.71	1	1.29	AK58203	2.93	6.52	AK58652	4.52	8.11	5.14	3.00	80	7.0
5,000	1-8	1.40	1.71	1	1.29	AK58210	2.81	6.52	AK58662	4.40	8.11	5.14	3.00	115	7.5
5,000	1-8	1.40	1.71	1	1.54	AK58212	2.81	6.52	AK58664	4.40	8.11	5.14	3.00	115	7.5
5,000	1-8	1.40	1.71	1	2.29	AK58214	2.81	6.52	AK58666	4.40	8.11	5.14	3.00	115	7.5
7,500	1-1/4-7	1.75	2.11	1-1/4	1.89	AK58802	4.12	8.73	-	-	-	6.50	3.76	235	14.0
12,000	1-1/2-6	2.25	2.81	1-3/4	2.70	AK58404	6.41	12.47	-	-	-	8.55	4.87	400	34.0
15,000	2-4-1/2	2.25	2.81	1-3/4	2.96	AK58400	5.91	12.47	-	-	-	8.55	4.87	400	36.0
25,000	2-1/2-8	3.00	4.09	2-1/4	4.00	AK59002	8.03	16.87	-	-	-	11.67	6.52	1050	88.0
25,000	2-1/2-4	3.00	4.09	2-1/4	4.00	AK59006	8.03	16.87	-	-	-	11.67	6.52	1050	88.0
37,500	3-4	3.75	5.27	2-3/4	4.20	AK59200	8.48	19.50	-	-	-	14.15	8.10	2150	166.0
50,000	3-1/2-4	4.00	6.06	3-1/4	7.00	AK59402	9.28	22.09	-	-	-	15.90	8.60	2550	265.0

Metric

Rated Load (Kgs)	Thread Size	A	C	D	E	Standard U-Bar			Long U-Bar				Torque (N-M)	Wt. (Kgs)	
						Part No.	B	F	Part No.	B	F	G			H
200	M8x1.25	11	18	10	13	AK58912	32	68	-	-	-	47	25	4	0.17
250	M10x1.50	11	18	10	18	AK58916	30	68	-	-	-	47	25	8	0.17
525	M12x1.75	22	30	19	19	AK58924	60	121	AK59124	110	171	89	51	18	1.08
950	M16x2.00	22	30	19	29	AK58930	56	121	AK59130	106	171	89	51	40	1.12
1,075	M20x2.50	22	30	19	34	AK58936	52	121	AK59136	102	171	89	51	68	1.19
1,500	M20x2.50	36	43	25	32	AK58942	78	166	AK59142	118	206	131	76	68	3.03
2,100	M24x3.00	36	43	25	37	AK58948	74	166	AK59148	114	206	131	76	108	3.10
2,100	M30x3.50	36	43	25	58	-	-	-	AK58950	108	206	131	76	108	3.10
3,500	M30x3.50	45	54	32	42	AK58956	106	222	-	-	-	165	95	318	6.30
3,500	M30x3.50	45	54	32	62	AK58958	106	222	-	-	-	165	95	318	6.40
5,500	M36x4.00	57	71	44	64	AK58966	166	317	-	-	-	217	124	542	15.50
6,250	M42x4.50	57	71	44	82	AK58968	160	317	-	-	-	217	124	542	16.00
6,750	M48x5.00	57	71	44	82	AK58970	154	317	-	-	-	217	124	542	16.80
11,150	M64x6.00	76	103	57	101	AK58972	204	428	-	-	-	296	165	1423	39.00
15,750	M72x6.00	95	133	70	132	AK58988	220	495	-	-	-	359	206	2915	74.00
22,300	M90x6.00	102	153	83	177	AK58990	235	561	-	-	-	404	218	3459	118.00