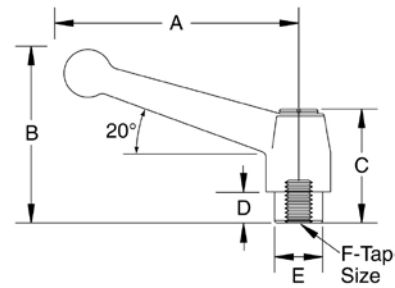


Zinc Ball Tapped Style Steel - Inch

Zinc die cast zinc ball style handle with durable black powder coated finish. RoHs compliant.



- Material:
 - Handle: Die cast zinc
 - Insert, screw & spring: Black zinc coated carbon steel
- Lift & Rotate: Handle is adjustable throughout a 360 degree rotation
- Chrome plated version available from stock

Part No.	A	B	C	D	E	F
70581	1.57	1.30	.95	.15	.39	10-24
70582	1.57	1.30	.95	.15	.39	1/4-20
70584	1.57	1.30	.95	.15	.39	10-32
70586	2.56	1.81	1.14	.25	.53	1/4-20
70587	2.56	1.81	1.14	.25	.53	5/16-18
70591	3.15	2.28	1.47	.39	.62	5/16-18
70592	3.15	2.28	1.47	.39	.62	3/8-16
70596	3.74	3.11	2.00	.47	.90	3/8-16
70597	3.74	3.11	2.00	.47	.90	1/2-13
70601	4.33	3.11	2.00	.47	.90	1/2-13
70602	4.33	3.11	2.00	.47	.90	5/8-11

Special order stud lengths, materials and colors available

Unique design reduces the cavity area around the retention screw for less debris accumulation

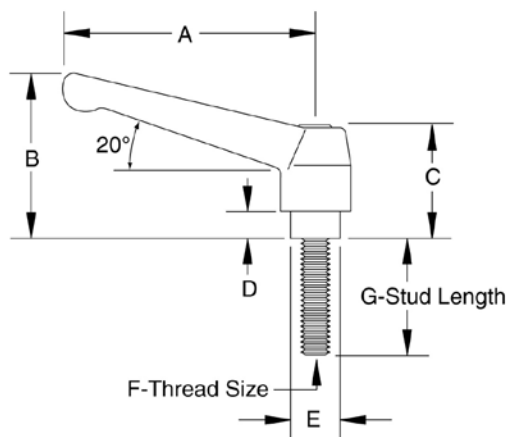
Zinc Classic Stud Style Steel - Inch

Zinc die cast classic style handle with durable black powder coated finish. RoHs compliant.



- Material:
 - Handle: Die cast zinc
 - Insert, screw & spring: Black zinc coated carbon steel
- Lift & Rotate: Handle is adjustable throughout a 360 degree rotation
- Chrome plated version available from stock
- Also available with stainless steel insert and stud

Special order stud lengths, materials and colors available



Part No.	A	B	C	D	E	Thread F	Length G
70606	1.77	1.38	.96	.16	.39	10-32	.59
70607	1.77	1.38	.96	.16	.39	10-32	.78
70608	1.77	1.38	.96	.16	.39	10-32	1.18
70614	1.77	1.38	.96	.16	.39	10-24	.59
70615	1.77	1.38	.96	.16	.39	10-24	.78
70616	1.77	1.38	.96	.16	.39	10-24	1.18
70622	1.77	1.38	.96	.16	.39	1/4-20	.59
70623	1.77	1.38	.96	.16	.39	1/4-20	.78
70624	1.77	1.38	.96	.16	.39	1/4-20	1.18
70640	2.48	1.77	1.22	.26	.53	5/16-18	.59
70641	2.48	1.77	1.22	.26	.53	5/16-18	.78
70642	2.48	1.77	1.22	.26	.53	5/16-18	1.18
70643	2.48	1.77	1.22	.26	.53	5/16-18	1.57
70646	2.48	1.77	1.22	.26	.53	5/16-18	2.36
70647	2.48	1.77	1.22	.26	.53	3/8-16	.59
70648	2.48	1.77	1.22	.26	.53	3/8-16	.78
70649	2.48	1.77	1.22	.26	.53	3/8-16	1.18
70650	2.48	1.77	1.22	.26	.53	3/8-16	1.57
70653	2.48	1.77	1.22	.26	.53	3/8-16	2.36
70658	3.07	2.17	1.42	.31	.63	3/8-16	.59
70659	3.07	2.17	1.42	.31	.63	3/8-16	.78
70660	3.07	2.17	1.42	.31	.63	3/8-16	1.18
70661	3.07	2.17	1.42	.31	.63	3/8-16	1.57
70664	3.07	2.17	1.42	.31	.63	3/8-16	2.36
70670	3.07	2.17	1.42	.31	.63	1/2-13	.78
70673	3.07	2.17	1.42	.31	.63	1/2-13	1.57
70676	3.62	2.56	1.69	.43	.75	3/8-16	.59
70677	3.62	2.56	1.69	.43	.75	3/8-16	.78
70678	3.62	2.56	1.69	.43	.75	3/8-16	1.18
70679	3.62	2.56	1.69	.43	.75	3/8-16	1.57
70682	3.62	2.56	1.69	.43	.75	3/8-16	2.36
70687	3.62	2.56	1.69	.43	.75	1/2-13	.59
70688	3.62	2.56	1.69	.43	.75	1/2-13	.78
70689	3.62	2.56	1.69	.43	.75	1/2-13	1.18
70691	3.62	2.56	1.69	.43	.75	1/2-13	1.57
70694	3.62	2.56	1.69	.43	.75	1/2-13	2.36
70699	4.25	2.99	1.99	.47	.91	1/2-13	.98
70700	4.25	2.99	1.99	.47	.91	1/2-13	1.57
70702	4.25	2.99	1.99	.47	.91	1/2-13	2.36
70706	4.25	2.99	1.99	.47	.91	5/8-11	1.57
70710	4.25	2.99	1.99	.47	.91	5/8-11	2.36