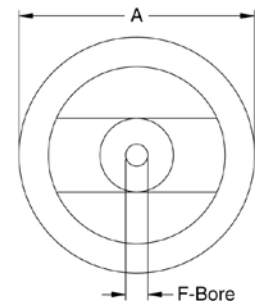
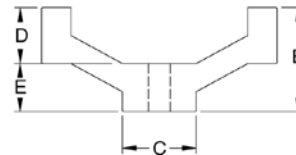


## 2 Spoke Aluminum Hand Wheels

- Material: High quality fine grain black powder coated gravity cast aluminum
- Available in a variety of diameters and bore sizes
- Custom bores, keyways and set screws available
- Polished versions available by special order (Add suffix "P" when ordering)

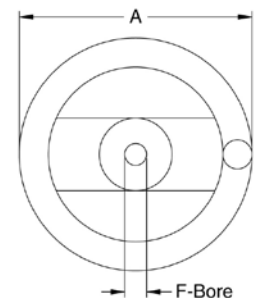
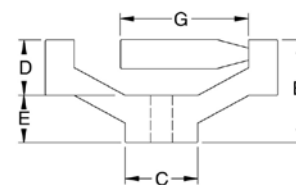
### Without Handle

Part No.	A	B	C	D	E	F
70920	4.00	1.77	1.25	.750	.812	3/8"
70921	4.00	1.77	1.25	.750	.812	1/2"
70922	5.00	1.93	1.31	.750	.875	3/8"
70923	5.00	1.93	1.31	.750	.875	1/2"
70924	6.00	2.05	1.44	.750	1.00	1/2"
70925	6.00	2.05	1.44	.750	1.00	5/8"
70926	8.00	2.74	1.94	.937	1.37	1/2"
70927	8.00	2.74	1.94	.937	1.37	5/8"
70928	10.00	2.80	1.94	.937	1.37	5/8"
70929	10.00	2.80	1.94	.937	1.37	3/4"



### With Folding Handle

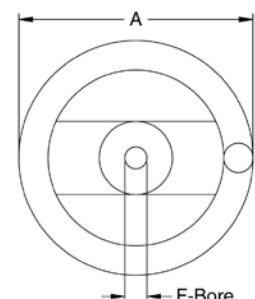
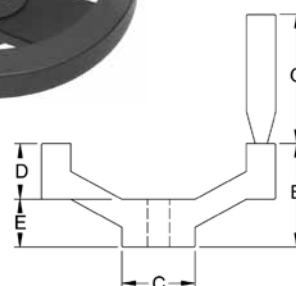
Part No.	A	B	C	D	E	F	G
70930	4.00	1.77	1.25	.750	.812	1/2"	1.97
70931	4.00	1.77	1.25	.750	.812	3/8"	1.97
70932	5.00	1.93	1.31	.750	.875	1/2"	2.56
70933	5.00	1.93	1.31	.750	.875	3/8"	2.56
70934	6.00	2.05	1.44	.750	1.00	5/8"	2.56
70935	6.00	2.05	1.44	.750	1.00	1/2"	2.56
70936	8.00	2.74	1.94	.937	1.37	5/8"	3.15
70937	8.00	2.74	1.94	.937	1.37	1/2"	3.15
70938	10.00	2.80	1.94	.937	1.37	3/4"	3.15
70939	10.00	2.80	1.94	.937	1.37	5/8"	3.15



Supplied with phenolic grip safety folding handle

### With Revolving Handle

Part No.	A	B	C	D	E	F	G
70940	4.00	1.77	1.25	.750	.812	1/2"	1.97
70941	4.00	1.77	1.25	.750	.812	3/8"	1.97
70942	5.00	1.93	1.31	.750	.875	1/2"	2.56
70943	5.00	1.93	1.31	.750	.875	3/8"	2.56
70944	6.00	2.05	1.44	.750	1.00	5/8"	2.56
70945	6.00	2.05	1.44	.750	1.00	1/2"	2.56
70946	8.00	2.74	1.94	.937	1.37	5/8"	3.15
70947	8.00	2.74	1.94	.937	1.37	1/2"	3.15
70948	10.00	2.80	1.94	.937	1.37	3/4"	3.15
70949	10.00	2.80	1.94	.937	1.37	5/8"	3.15



Supplied with phenolic revolving handle