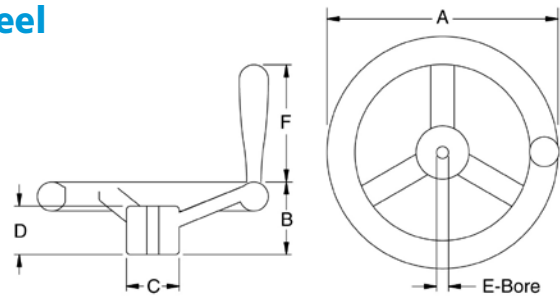


3 Spoked Cast Iron Dished Style Hand Wheel with Revolving Handle

- Material: Cast iron
- Finish: Nickel plated with polished rim
- Handle: Chrome plated steel revolving with wrench flats

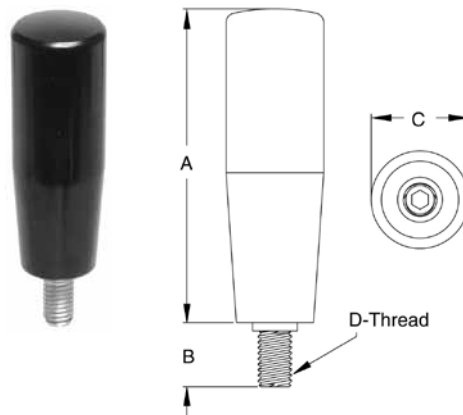
Oversized hub can accommodate all types of bores, keyways and set screws



Part No.	A	B	C	D	E	F
70980	4.00	1.70	1.57	.90	3/8"	2.40
70981	6.00	2.08	1.98	1.18	1/2"	2.95
70982	8.00	2.28	2.32	1.22	5/8"	2.95
70983	10.00	2.48	2.64	1.26	3/4"	2.95
70984	12.00	2.83	2.75	1.54	3/4"	2.95

Phenolic Revolving Handles – Steel and Stainless Steel

- Material:
 - Handle: Phenolic plastic
 - Spindle:
 - Steel: Zinc plated steel
 - Stainless: Grade 303 stainless steel
- Polished finish with no parting lines
- Smooth operating permanently lubricated spindle
- Bottom mount hex socket for easy insertion or replacement

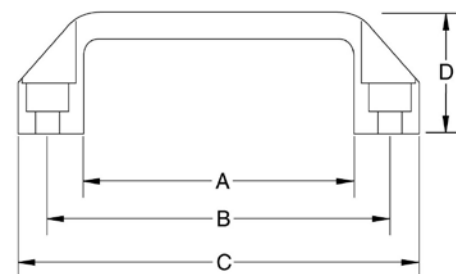


Steel Part No.	Stainless Part No.	A	B	C	D
71000	71013	1.57	.47	.71	1/4-20
71001	71014	1.57	.47	.71	M6
71002	71015	1.97	.51	.83	1/4-202
71003	71016	1.97	.51	.83	M6
71004	71017	2.56	.59	.90	5/16-18
71005	71018	2.56	.59	.90	M8
71006	71019	3.15	.67	1.02	3/8-16
71007	71020	3.15	.67	1.02	M10
71008	71021	3.15	.67	1.02	M8
71009	71022	3.54	.67	1.10	3/8-16
71010	71023	3.54	.67	1.10	M10
71011	71024	4.02	.78	1.22	1/2-13

Pull Handle – Plastic Bridge Top Mount

PA6 top mount bridge handle with smooth radius edges. Standard on most modular framing systems and enclosures.

- Material: PA6, matte black color
- Top mount with socket head screws (not included)



Part No.	A	B	C	D	Mount Hole
71160	2.91	3.68	4.40	1.42	1/4"
71161	3.74	4.60	5.47	1.61	5/16"
71162	4.25	5.20	6.14	1.77	5/16"