

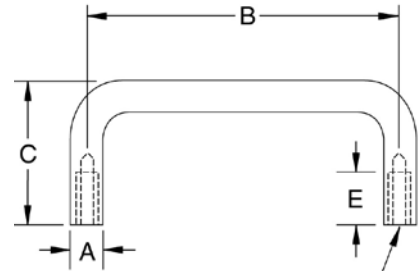


CLAMPING LEVERS & HANDLES

Pull Handle – Plastic Wire Bottom Mount

Reinforced thermoplastic wire pull with sleek oval design.

- Material: Reinforced Nylon 6
- Molded in brass tapped inserts for bottom mounting
- Supplied with two leg support discs for increased stability



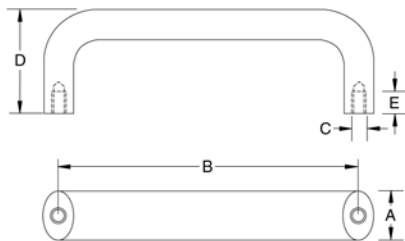
Part No.	A	B	C	D	E
71171	12	100	40	M5	15
71172	12	120	40	M5	15
71173	12	88	40	M5	15

Pull Handle – Aluminum Cabinet Top and Bottom Mount

- Ergonomically designed for operator comfort
- Material: Extruded aluminum with black powder coating
- Industry standard handle for modular cabinet/machine enclosures
- Anodized finish options available (special order)



Bottom tapped for mounting

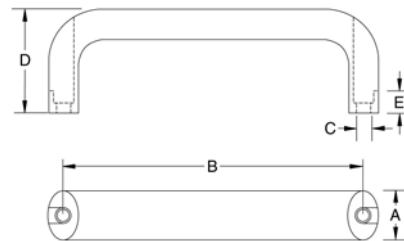


Bottom Mount

Part No.	A	B	C	D	E
71178	1.02	4.41	M8	1.93	.47
71179	1.02	4.61	M8	2.09	.47
71180	1.02	5.04	M8	2.16	.47
71181	1.02	6.30	M8	2.24	.47
71182	1.02	7.05	M8	2.24	15



Top side counterbored holes for mounting



Top Mount

Part No.	A	B	C	D	E
71183	1.02	4.57	.256	2.08	.67
71184	1.02	5.20	.256	2.08	.67
71185	1.02	6.46	.256	2.24	.67
71186	1.02	7.71	.256	2.24	.67