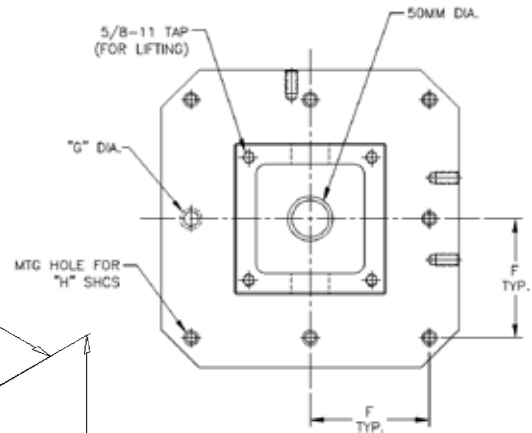
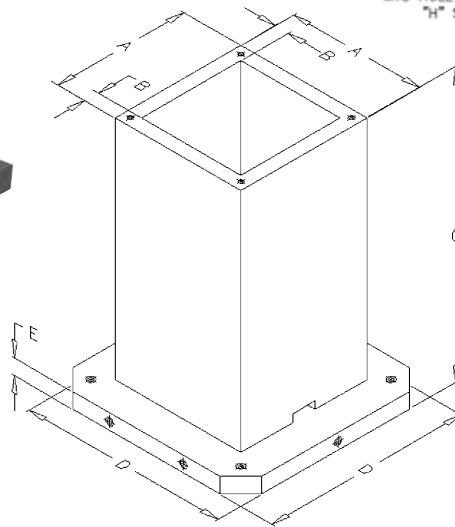


COLUMNS & PLATES



Columns



English

Part No.	A	B	C	D	E	F	G	H	Approx. Weight
25311	6.00	1.12	18.00	12.60	1.50	4.96	20mm	1/2" or M12	170 lbs.
25300	8.00	1.12	21.50	15.70	1.75	6.30	20mm	1/2" or M12	330 lbs.
25301	10.00	1.12	25.50	15.70	1.75	6.30	20mm	1/2" or M12	430 lbs.
25302	8.00	1.12	21.75	19.70	2.00	7.87	20mm	1/2" or M12	430 lbs.
25303	10.00	1.12	25.75	19.70	2.00	7.87	20mm	1/2" or M12	530 lbs.
25304	12.00	1.25	31.75	19.70	2.00	7.87	20mm	1/2" or M12	725 lbs.
25305	14.00	1.25	31.75	19.70	2.00	7.87	20mm	1/2" or M12	810 lbs.
25306	8.00	1.12	22.00	24.80	2.25	9.84	25mm	5/8" or M16	610 lbs.
25307	10.00	1.12	26.00	24.80	2.25	9.84	25mm	5/8" or M16	710 lbs.
25308	12.00	1.25	32.00	24.80	2.25	9.84	25mm	5/8" or M16	900 lbs.
25309	14.00	1.25	32.00	24.80	2.25	9.84	25mm	5/8" or M16	1000 lbs.
25310	16.00	1.50	32.00	24.80	2.25	9.84	25mm	5/8" or M16	1175 lbs.

Metric

Part No.	A	B	C	D	E	F	G	H	Approx. Weight
65300	200	27	550	400	45	160	20mm	M12 or 1/2"	330 lbs.
65301	250	27	650	400	45	160	20mm	M12 or 1/2"	430 lbs.
65302	200	27	555	500	50	200	20mm	M12 or 1/2"	430 lbs.
65303	250	27	655	500	50	200	20mm	M12 or 1/2"	530 lbs.
65304	300	30	805	500	50	200	20mm	M12 or 1/2"	725 lbs.
65305	350	30	805	500	50	200	20mm	M12 or 1/2"	810 lbs.
65306	200	27	560	630	55	250	25mm	M16 or 5/8"	610 lbs.
65307	250	27	660	630	55	250	25mm	M16 or 5/8"	710 lbs.
65308	300	30	810	630	55	250	25mm	M16 or 5/8"	900 lbs.
65309	350	30	810	630	55	250	25mm	M16 or 5/8"	1000 lbs.
65310	400	35	810	630	55	250	25mm	M16 or 5/8"	1175 lbs.

- Provides an accurate fixturing base for workpieces on horizontal and multi-axis machining centers.
- Provide a locating and mounting base for fixture plates.
- Material: One-piece stress relieved class 40 Meehanite cast iron or equivalent.
- Base and sides are milled flat, parallel, and square to .001 in 12".
- Columns are provided with the standard DIN and JIS mounting configuration (see page 206) and coolant drain holes.
- Columns are plain, without a grid pattern or holes, on all four sides.
- Grid patterns, non-standard mounting configurations, and special sizes are available and will be quoted upon request. See pages 212 and 213 for column quotation worksheets.
- TE-CO supports these products with a full line of tooling components for your fixturing needs (pages 2-70).
- Hoist rings are also available for proper material handling (pages 139-159).