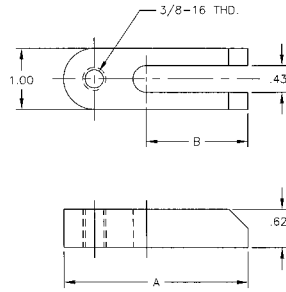


TOOLING COMPONENTS



"U" Clamp

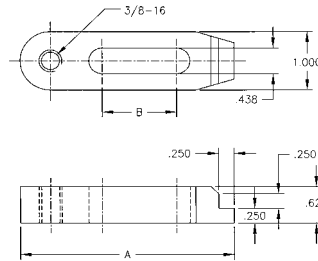
- Included in jig bore kit (page 5)
- Material 1018 Steel
- Black Oxide Finish
- Case Hardened



| Part No. | A | B |
|--------------|------|-------|
| 30001 | 2.00 | 0.656 |
| 30002 | 3.00 | 1.656 |

Single Toe Clamp

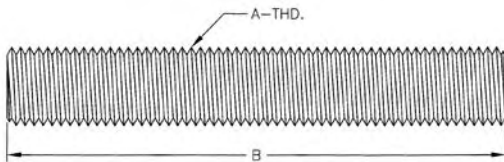
- Included in jig bore kit (page 5)
- Material 1018 Steel
- Black Oxide Finish
- Case Hardened



| Part No. | A | B |
|--------------|------|-------|
| 30820 | 2.75 | 0.688 |
| 30821 | 3.50 | 1.438 |

Threaded Rod

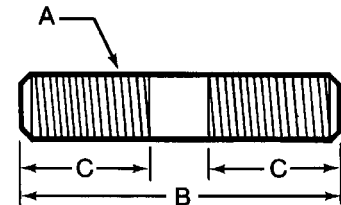
- Black Oxide Finish
- Medium Carbon Steel



| Part No. | A | B |
|--------------|---------|-------|
| 45170 | 1/4-20 | 1 ft. |
| 45171 | 5/16-18 | 1 ft. |
| 45172 | 3/8-16 | 1 ft. |
| 45173 | 1/2-13 | 1 ft. |
| 45174 | 5/8-11 | 1 ft. |
| 45175 | 3/4-10 | 1 ft. |
| 45176 | 7/8-9 | 1 ft. |
| 45177 | 1-8 | 1 ft. |
| 45160 | 1/4-20 | 3 ft. |
| 45161 | 5/16-18 | 3 ft. |
| 45162 | 3/8-16 | 3 ft. |
| 45163 | 1/2-13 | 3 ft. |
| 45164 | 5/8-11 | 3 ft. |
| 45165 | 3/4-10 | 3 ft. |
| 45166 | 7/8-9 | 3 ft. |
| 45167 | 1-8 | 3 ft. |
| 45150 | 1/4-20 | 6 ft. |
| 45151 | 5/16-18 | 6 ft. |
| 45152 | 3/8-16 | 6 ft. |
| 45153 | 1/2-13 | 6 ft. |
| 45154 | 5/8-11 | 6 ft. |
| 45155 | 3/4-10 | 6 ft. |
| 45156 | 7/8-9 | 6 ft. |
| 45157 | 1-8 | 6 ft. |

Stainless Steel Driver Studs

- Material: 303 Series Stainless Steel
- Rolled Threads



| Part No. | Thread A | B | C |
|--------------|----------|-------|------|
| 40374 | 1/4-20 | 3.00 | 1.00 |
| 40376 | 1/4-20 | 4.00 | 1.00 |
| 40378 | 1/4-20 | 5.00 | 1.00 |
| 40474 | 5/16-18 | 3.00 | 1.00 |
| 40476 | 5/16-18 | 4.00 | 1.13 |
| 40574 | 3/8-16 | 3.00 | 1.13 |
| 40576 | 3/8-16 | 4.00 | 1.25 |
| 40578 | 3/8-16 | 5.00 | 1.25 |
| 40580 | 3/8-16 | 6.00 | 1.25 |
| 40584 | 3/8-16 | 8.00 | 1.25 |
| 40785 | 1/2-13 | 4.00 | 1.50 |
| 40787 | 1/2-13 | 5.00 | 1.50 |
| 40789 | 1/2-13 | 6.00 | 1.50 |
| 40793 | 1/2-13 | 8.00 | 1.50 |
| 40876 | 5/8-11 | 4.00 | 1.75 |
| 40878 | 5/8-11 | 5.00 | 1.75 |
| 40880 | 5/8-11 | 6.00 | 1.75 |
| 40884 | 5/8-11 | 8.00 | 1.75 |
| 40971 | 3/4-10 | 3.00 | 1.25 |
| 40973 | 3/4-10 | 4.00 | 1.75 |
| 40977 | 3/4-10 | 6.00 | 2.00 |
| 40981 | 3/4-10 | 8.00 | 2.00 |
| 40983 | 3/4-10 | 10.00 | 2.00 |