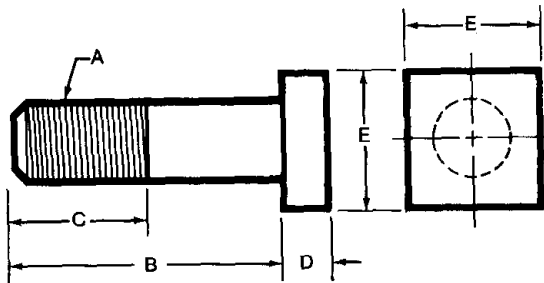


## Tugger® T-Bolts

- Black Oxide Finish
- Medium Carbon Steel
- Heat Treated
- Thread Class 2A UNC
- Special lengths and sizes quoted upon request



Part No.	Thread A	B	C	D	E	Table Slot	Weight (lbs/100pcs)
46201	3/8-16	1-1/2	1	1/4	11/16	3/8	7
46202	3/8-16	2	1-1/2	1/4	11/16	3/8	9
46203	3/8-16	2-1/2	2	1/4	11/16	3/8	11
46204	3/8-16	3	2	1/4	11/16	3/8	12
46205	3/8-16	3-1/2	2	1/4	11/16	3/8	13
46206	3/8-16	4	2	1/4	11/16	3/8	15
46207	3/8-16	5	2	1/4	11/16	3/8	18
46208	3/8-16	6	2	1/4	11/16	3/8	21
46209	3/8-16	7	2	1/4	11/16	3/8	25
46210	3/8-16	8	2	1/4	11/16	3/8	27
46401	1/2-13	1-1/2	1	5/16	7/8	1/2	14
46402	1/2-13	2	1-1/2	5/16	7/8	1/2	17
46403	1/2-13	2-1/2	2	5/16	7/8	1/2	18
46404	1/2-13	3	2	5/16	7/8	1/2	21
46405	1/2-13	3-1/2	2	5/16	7/8	1/2	24
46406	1/2-13	4	2	5/16	7/8	1/2	27
46413	1/2-13	4-1/2	2	5/16	7/8	1/2	30
46407	1/2-13	5	2	5/16	7/8	1/2	32
46414	1/2-13	5-1/2	2	5/16	7/8	1/2	35
46408	1/2-13	6	2	5/16	7/8	1/2	38
46409	1/2-13	7	2	5/16	7/8	1/2	43
46410	1/2-13	8	2	5/16	7/8	1/2	49
46411	1/2-13	10	2	5/16	7/8	1/2	59
46412	1/2-13	12	2	5/16	7/8	1/2	70
46501	5/8-11	1-1/2	1	13/32	1-1/8	5/8	25
46502	5/8-11	2	1-1/2	13/32	1-1/8	5/8	29
46503	5/8-11	2-1/2	2	13/32	1-1/8	5/8	32
46504	5/8-11	3	2	13/32	1-1/8	5/8	37
46505	5/8-11	3-1/2	2	13/32	1-1/8	5/8	42
46506	5/8-11	4	2	13/32	1-1/8	5/8	45
46513	5/8-11	4-1/2	2	13/32	1-1/8	5/8	50
46507	5/8-11	5	2	13/32	1-1/8	5/8	54
46514	5/8-11	5-1/2	2	13/32	1-1/8	5/8	59
46508	5/8-11	6	2	13/32	1-1/8	5/8	62
46509	5/8-11	7	2	13/32	1-1/8	5/8	72
46510	5/8-11	8	2	13/32	1-1/8	5/8	81
46511	5/8-11	10	2	13/32	1-1/8	5/8	96
46512	5/8-11	12	2	13/32	1-1/8	5/8	115
46600	3/4-10	2-1/2	2	17/32	1-5/16	3/4	56
46601	3/4-10	3	2	17/32	1-5/16	3/4	58
46602	3/4-10	3-1/2	2	17/32	1-5/16	3/4	65
46603	3/4-10	4	2	17/32	1-5/16	3/4	67
46610	3/4-10	4-1/2	2	17/32	1-5/16	3/4	73
46604	3/4-10	5	2	17/32	1-5/16	3/4	80
46611	3/4-10	5-1/2	2	17/32	1-5/16	3/4	90
46605	3/4-10	6	2	17/32	1-5/16	3/4	94
46606	3/4-10	7	2	17/32	1-5/16	3/4	106
46607	3/4-10	8	2	17/32	1-5/16	3/4	118
46608	3/4-10	10	2	17/32	1-5/16	3/4	144
46609	3/4-10	12	2	17/32	1-5/16	3/4	168