

# TOOLING COMPONENTS

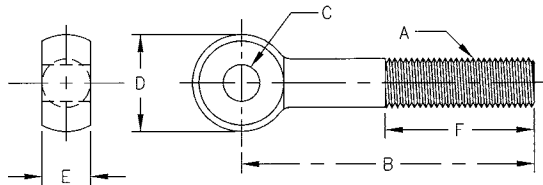


## Eye Bolts

- Black Oxide Finish
- ASTM A311 Material
- Thread Class 2A UNC
- Special sizes quoted upon request
- Many sizes conform to TCMAI standards



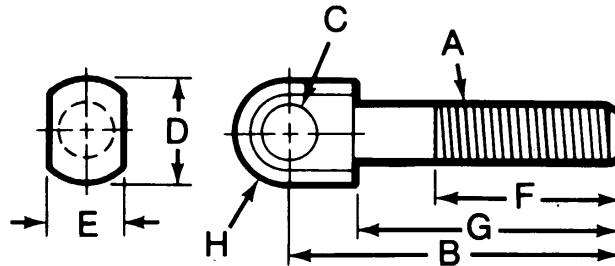
*Metric sizes manufactured upon request*



Part No.	Thread A	B	+0.001 -0.000 C	D	+0.000 -0.005 E	F	Weight (lbs/100pcs)
42930	1/4-20	2	3/16	1/2	1/4	3/4	3.2
42931	1/4-20	3	3/16	1/2	1/4	1-1/4	4.3
42935	5/16-18	3	1/4	5/8	5/16	1-1/2	6.9
42936	5/16-18	3	5/16	5/8	5/16	1-1/2	6.8
42937	5/16-18	4	1/4	5/8	5/16	2	8.9
42938	5/16-18	4	5/16	5/8	5/16	2	8.6
42940	3/8-16	3	5/16	3/4	3/8	1-1/2	10.6
42941	3/8-16	3	3/8	3/4	3/8	1-1/2	10.3
42942	3/8-16	3-3/4	3/8	3/4	3/8	2	12
42943	3/8-16	5	3/8	3/4	3/8	2-1/2	16
42945	1/2-13	3-3/4	3/8	1	1/2	1-1/2	25
42946	1/2-13	5	3/8	1	1/2	2	31
42950	5/8-11	4-1/2	5/8	1-1/4	5/8	2	44
42951	5/8-11	6	5/8	1-1/4	5/8	2-1/2	56
42955	3/4-10	4-1/2	3/4	1-1/2	3/4	2	65
42956	3/4-10	6	3/4	1-1/2	3/4	2-1/2	83

## Latch Swing Bolts

- Black Oxide Finish – steel only
- Case Hardened – steel only
- Material: 12L14 Steel or 303 Stainless Steel
- Thread Class 2A UNC
- Special sizes quoted upon request
- Metric sizes manufactured upon request
- Many sizes conform to TCMAI standards



Steel Part No.	Stainless Steel Part No.	Thread A	B	+0.001 -0.000 C	D	+0.000 -0.005 E	F	G	H	Weight (lbs/100pcs)
43001	43021	1/4-20	1-1/2	1/4	1/2	5/16	3/4	1-3/16	1/4	3
43002	43022	1/4-20	2-1/2	1/4	1/2	5/16	1-1/4	2-3/16	1/4	4.1
43013	43033	1/4-20	2-5/8	1/4	1/2	1/4	2-5/16	2-5/16	1/4	5
43003	43023	5/16-18	2	5/16	5/8	3/8	1	1-5/8	5/16	6
43004	43024	5/16-18	3	5/16	5/8	3/8	1-3/8	2-5/8	5/16	9
43014	43034	5/16-18	3-3/16	5/16	5/8	5/16	2-13/16	2-13/16	21/64	9.5
43005	43025	3/8-16	2-1/2	3/8	3/4	1/2	1-3/8	2	3/8	10
43006	43026	3/8-16	3-1/2	3/8	3/4	1/2	2	3	3/8	14
43015	43035	3/8-16	3-3/4	3/8	3/4	3/8	3-5/16	3.38	25/64	20
43007	43027	1/2-13	3-1/8	1/2	1	5/8	1-3/4	2-1/2	1/2	28
43008	43028	1/2-13	4-1/8	1/2	1	5/8	2-1/4	3-1/2	1/2	30
43016	43036	1/2-13	4-7/8	1/2	1	1/2	4-5/16	4-5/16	33/64	37
43009	43029	5/8-11	3-1/2	5/8	1-1/4	3/4	1-5/8	2-3/4	5/8	45
43010	43030	5/8-11	4-3/4	5/8	1-1/4	3/4	2-1/2	4	5/8	55
43011	43031	3/4-10	4-1/2	3/4	1-1/2	7/8	2	3-5/8	3/4	65
43012	43032	3/4-10	6	3/4	1-1/2	7/8	3	3-5/16	3/4	83