

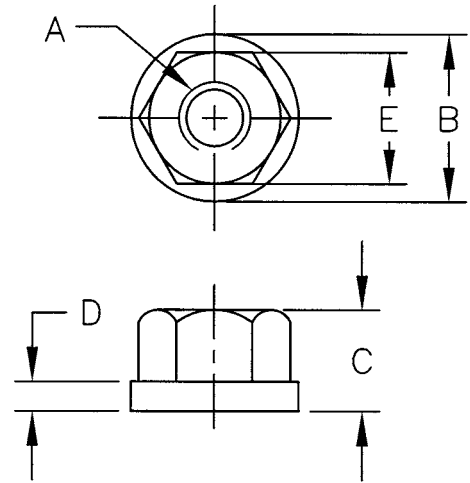
Stainless Steel Flange Nuts



- 303 Stainless Steel
- Special sizes quoted upon request

Can be used with:

- Driver Studs, page 8
- T-Bolts, pages 16
- Latch Bolts, page 18



| Part No. | Thread A | B | C | D | E | Weight (lbs/100pcs) |
|----------|----------|-------|-------|------|---------|---------------------|
| 47601 | 1/4-20 | 5/8 | 5/16 | 3/32 | 1/2 | 4 |
| 47602 | 5/16-18 | 3/4 | 3/8 | 1/8 | 9/16 | 5 |
| 47603 | 3/8-16 | 7/8 | 1/2 | 1/8 | 11/16 | 6 |
| 47604 | 7/16-14 | 1 | 9/16 | 5/32 | 3/4 | 8 |
| 47605 | 1/2-13 | 1-1/8 | 11/16 | 3/16 | 7/8 | 12 |
| 47606 | 5/8-11 | 1-3/8 | 13/16 | 3/16 | 1-1/16 | 19 |
| 47607 | 3/4-10 | 1-5/8 | 1 | 1/4 | 1-1/4 | 32 |
| 47608 | 7/8-9 | 1-3/4 | 1-1/8 | 1/4 | 1-7/16 | 43 |
| 47609 | 1-8 | 2 | 1-1/4 | 1/4 | 1-5/8 | 60 |
| 47611 | 1-1/4-7 | 2-1/2 | 1-1/4 | 1/4 | 1-13/16 | 67 |

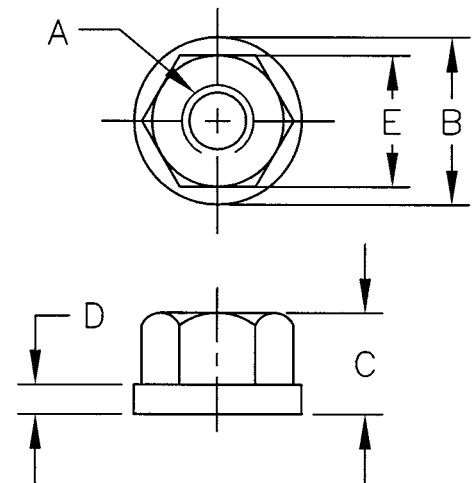
Swivel Flange Nuts



- Black oxide finish, case hardened
- 12L14 Material
- Head rotates but washer remains stationary upon contact and holds rigidly without marring the workpiece

Can be used with:

- Driver Studs, pages 8-12
- T-Slot Bolts, pages 13-15
- T-Bolts, pages 16-17



| Part No. | Thread A | B | C | D | E | Weight (lbs/100pcs) |
|----------|----------|-------|---------|-------|--------|---------------------|
| 42001 | 1/4-20 | 5/8 | 3/8 | 1/8 | 1/2 | 2 |
| 42002 | 5/16-18 | 3/4 | 7/16 | 9/64 | 9/16 | 3 |
| 42003 | 3/8-16 | 7/8 | 17/32 | 5/32 | 11/16 | 4 |
| 42004 | 1/2-13 | 1-1/8 | 23/32 | 7/32 | 7/8 | 11 |
| 42005 | 5/8-11 | 1-3/8 | 29/32 | 1/4 | 1-1/16 | 18 |
| 42006 | 3/4-10 | 1-5/8 | 1-1/64 | 9/32 | 1-1/4 | 28 |
| 42007 | 7/8-9 | 1-3/4 | 1-1/8 | 7/16 | 1-7/16 | 41 |
| 42008 | 1-8 | 2 | 1-15/64 | 15/32 | 1-5/8 | 57 |