

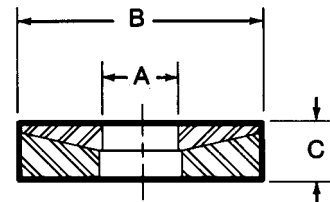
Spherical Washers – Stainless Steel

- Material: 303 stainless steel
- Tops and bottoms also sold separately
- Reduces stress on threads
- Bottom Washer can be used with Spherical Flange Nuts
- Compensates for slight misalignment between the workpiece and strap clamp
- Many sizes conform to TCMAI standards
- Special sizes quoted upon request



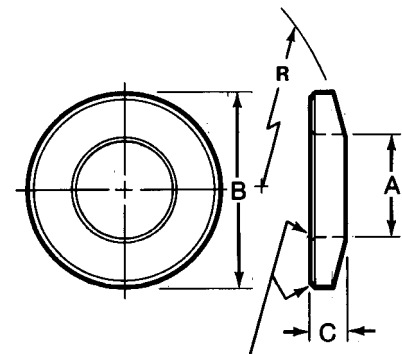
Assemblies

Stainless Steel Part No.	Male Part No. A	Female Part No. B	Stud Size	Ref. C	Total Degree of Rotation	Weight (lbs/100pcs)
47701	47721	47741	1/4	3/16	8	1
47702	47722	47742	3/8	1/4	5	4
47703	47723	47743	1/2	5/16	2	8
47704	47724	47744	5/8	5/16	2	10
47705	47725	47745	3/4	3/8	3	17



Male (Top) Spherical Washers

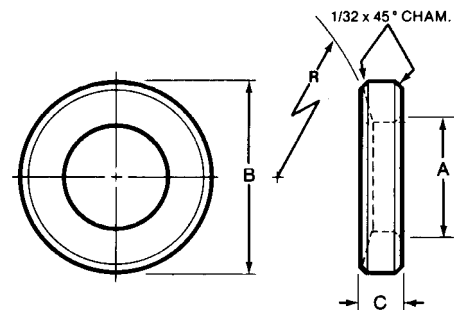
Stainless Steel Part No.	Stud Size	A	B	+0.000 -0.005 C	Rad. R	Total Weight (lbs/100pcs)
47721	1/4	9/32	5/8	1/8	3/4	1
47722	3/8	13/32	7/8	11/64	1-1/4	1
47723	1/2	17/32	1-1/8	13/64	1-1/2	3
47724	5/8	21/32	1-3/8	13/64	1-3/4	4
47725	3/4	25/32	1-5/8	1/4	2-1/4	7



1/32 x 45° CHAM.

Female (Bottom) Spherical Washers

Stainless Steel Part No.	Stud Size	A	B	+0.000 -0.005 C	Rad. R	Total Weight (lbs/100pcs)
47741	1/4	9/32	5/8	1/8	3/4	1
47742	3/8	13/32	7/8	11/64	1-1/4	2
47743	1/2	17/32	1-1/8	7/32	1-1/2	3
47744	5/8	21/32	1-3/8	7/32	1-3/4	5
47745	3/4	25/32	1-5/8	1/4	2-1/4	10



1/32 x 45° CHAM.