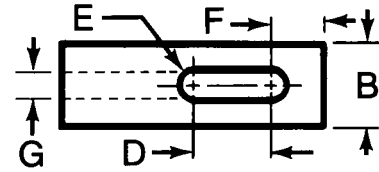
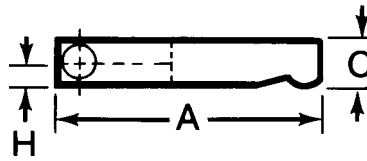


Center Clamps

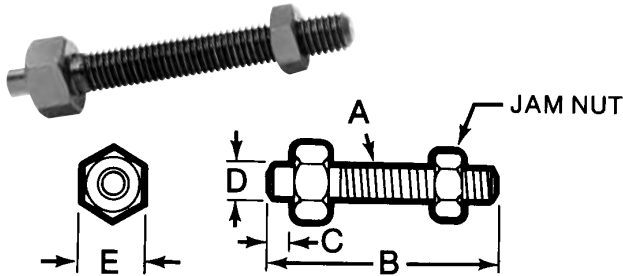
- Material: 1018 Steel
- Case Hardened, Black Oxide Finish
- See Clamp Rest below to place in center groove
- Finger grips on both sides



Part No.	A	B	C	D	Stud Size E	F	G	H	Wt. (lbs/100pcs)
30102	2-1/2	5/8	3/8	3/4	1/4	1/2	3/16	1/8	16
30103	4	1-1/4	5/8	1-1/4	1/2	3/4	3/8	9/32	65
30105	5	1-1/4	5/8	1-3/4	1/2	3/4	3/8	9/32	81
30106	5-1/2	1-1/4	5/8	2	1/2	3/4	3/8	9/32	93
30107	6	1-1/4	5/8	2-1/4	1/2	3/4	3/8	9/32	109
30108	4-1/2	1-1/2	3/4	1-3/8	5/8	7/8	1/2	9/32	116
30109	5	1-1/2	3/4	1-5/8	5/8	7/8	1/2	9/32	228

Clamp Rest

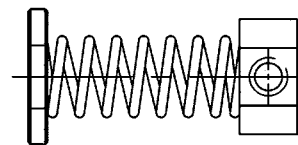
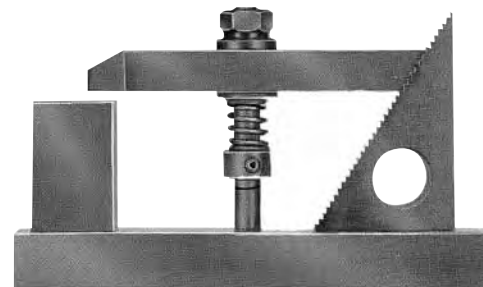
- Material: Low Carbon Steel
- Screw Case Hardened, Black Oxide Finish.
- Many sizes conform to TCMAI standards
- Clamp Rests can be used with Center Clamps



Part No.	A	B	C	D	E	Wt. (lbs/100pcs)
44001	1/4-20	1-1/4	1/8	5/32	7/16	4
44002	3/8-16	2-1/4	7/32	11/32	9/16	12
44003	1/2-13	2-3/8	1/4	11/32	11/16	41
44004	1/2-13	3-7/8	1/4	11/32	11/16	30
44006	5/8-11	3-7/8	1/4	15/32	7/8	39
44008	3/4-10	3-7/8	1/4	15/32	1-1/16	78
44009	5/16-18	1-7/8	3/16	7/32	1/2	5
44010	5/16-18	2-1/4	3/16	7/32	1/2	5.5

Clamp Supports

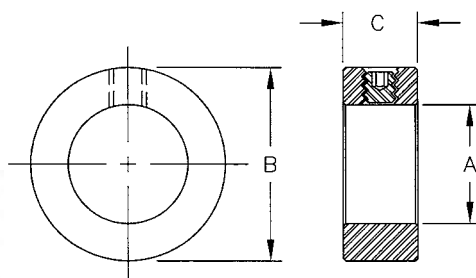
- Includes Washer, Spring and Shaft Collar
- Black Oxide Finish on washer only



Part No.	Stud Size	Weight (lbs/kit)
50801	1/4	4
50802	5/16	4
50803	3/8	8
50804	1/2	12
50805	5/8	19
50806	3/4	26
50808	1	31

Shaft Collars

- Material: 12L14 Steel
- Zinc Plated
- Set screw draws collar to stud



Part No.	A	B	C	Set Screw Thread	Weight (lbs/100pcs)
50901	1/4	1/2	9/32	10-32	1
50902	5/16	5/8	11/32	10-32	1
50903	3/8	3/4	3/8	1/4-20	2
50904	1/2	1	7/16	1/4-20	2
50905	5/8	1-1/8	1/2	5/16-18	6
50906	3/4	1-1/4	9/16	5/16-18	7
50908	1	1-5/8	5/8	5/16-18	3