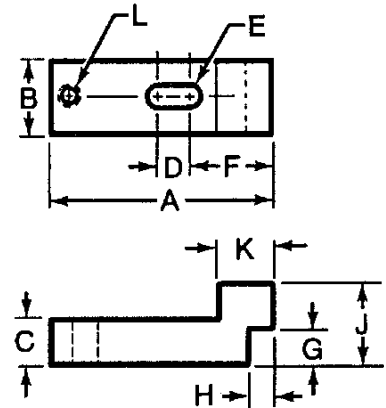


## Step Clamps

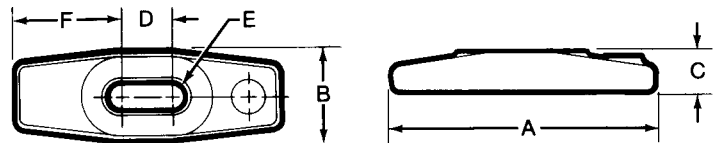
- Material: 1018 Steel
- Black Oxide Finish
- Case Hardened



Part No.	A	B	C	D	Stud Size E	F	G	H	J	K	Thread L	Weight (lbs./100 pcs.)
<b>30801</b>	3-1/4	1	5/8	7/8	3/8	1-3/16	1/2	1/2	1-1/8	3/4	3/8-16	50
<b>30802</b>	3-5/8	1-1/8	5/8	7/8	1/2	1-7/16	1/2	1/2	1-1/8	7/8	3/8-16	66
<b>30803</b>	3-3/4	1-1/4	3/4	7/8	5/8	1-7/16	3/4	3/8	1-3/8	3/4	3/8-16	84
<b>30804</b>	4-1/4	1-1/2	3/4	3/4	3/4	1-7/8	3/4	3/8	1-3/8	13/16	1/2-13	118

## Forged Plain Clamps

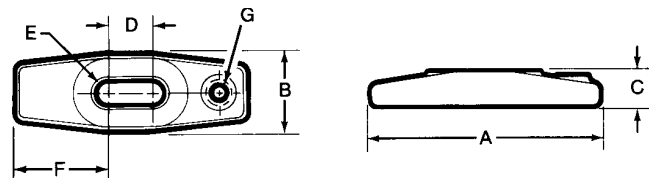
- Material: Forged high tensile carbon steel
- Black Oxide Finish



Part No.	A	B	C	D	Stud Size E	F	Wt. (lbs/100pcs)
<b>33901</b>	4	1-5/8	3/4	11/16	5/8 or 1/2	1-21/32	86
<b>33902</b>	6	1-3/4	7/8	1-3/8	5/8 or 1/2	2-5/16	173
<b>33903</b>	8	2-1/8	1-1/8	2	3/4	2-31/32	366
<b>33904</b>	10	2-1/2	1-3/8	2-3/4	7/8	3-5/8	657

## Forged Tapped Plain Clamps

- Material: Forged high tensile carbon steel
- Black Oxide Finish



Part No.	A	B	C	D	Stud Size E	F	Tap G	Wt. (lbs/100pcs)
<b>33911</b>	4	1-5/8	3/4	11/16	5/8 or 1/2	1-21/32	1/2-13	82
<b>33912</b>	6	1-3/4	7/8	1-3/8	5/8 or 1/2	2-5/16	5/8-11	168
<b>33913</b>	8	2-1/8	1-1/8	2	3/4	2-31/32	3/4-10	360
<b>33914</b>	10	2-1/2	1-3/8	2-3/4	7/8	3-5/8	7/8-9	630