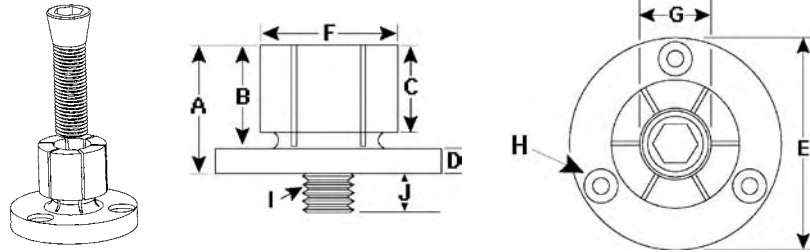


## ID Expansion™ Clamp



- Low profile
- Ideal for secondary operations on lathe parts
- Easily machined to size on lathe or mill
- Excellent for palletized setups
- Allows more parts per workcube or fixture plate
- Clamp body made of mild steel for machinability
- Tighten with hex key or hydraulic pull cylinders

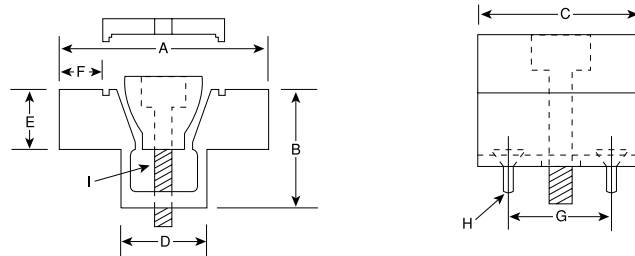
PATENT PENDING

Part No.	Model No.	A	B	C	D	+0.000 E -0.002	F	G*	H**	I	J
35260	#0	.86	.63	.59	.23	1.170	.49	.28	6-32 on .825 BHC	8-32	.30
35261	#1	.98	.75	.59	.23	1.240	.56	.48	6-32 on .910 BHC	1/4-20	.50
35262	#2	.98	.75	.59	.23	1.476	.79	.53	6-32 on 1.140 BHC	5/16-18	.56
35263	#3	1.13	.88	.69	.25	1.968	1.06	.71	8-32 on 1.550 BHC	3/8-16	.71
35264	#4	1.25	1.0	.81	.25	2.205	1.39	.90	8-32 on 1.790 BHC	1/2-13	.71
35265	#5	1.56	1.25	1.06	.31	2.736	1.65	1.15	10-32 on 2.200 BHC	5/8-11	.79
35266	#6	1.56	1.25	1.06	.31	2.972	2.03	1.15	10-32 on 2.515 BHC	5/8-11	.79
35267	#7	1.79	1.48	1.27	.31	4.232	3.06	1.15	1/4-20 on 3.646 BHC	5/8-11	.79
35268	#00	.42	.30	.24	.12	.787	.29	.16	2-56 on .540 BHC	2-56	.16
35269	#8	1.79	1.48	1.27	.31	5.232	4.06	1.15	1/4-20 on 4.648 BHC	5/8-11	.79

\*"G": Minimum diameter the "F" dimension can be machined or turned down to

\*\*H: 3 mounting screws included

## Machinable Uniforce Clamps



- Hold round and unusual shaped parts with ease
- Compact method allows more parts per load at a lower price than vise soft jaw
- Available with extra material on the clamping jaws so it can be machined to conform to the shape of your workpiece
- Specially designed steel wedge spreads the clamping force uniformly on both sides of the 7075-T6 aluminum channel
- Unique locking plate makes the clamp rigid while machining the jaws to your specifications, without vibration

Part No.	Description	Model	A*	B	C	D	E	F**	G	H***	I
35350	1 Clamp Assembly w/Locking Plate	500	1.125	.50	.62	.420	.25	.18	.400	2-56	8-32
35351	1 Clamp Assembly, No Locking Plate	500	1.125	.50	.62	.420	.25	.18	.400	2-56	8-32
35352	1 Clamp Assembly w/Locking Plate	750	1.50	.75	.94	.632	.37	.26	.625	6-32	1/4-20
35353	1 Clamp Assembly, No Locking Plate	750	1.50	.75	.94	.632	.37	.26	.625	6-32	1/4-20
35354	1 Clamp Assembly w/Locking Plate	1000	2.00	1.0	1.25	.820	.50	.39	.812	6-32	5/16-18
35355	1 Clamp Assembly, No Locking Plate	1000	2.00	1.0	1.25	.820	.50	.39	.812	6-32	5/16-18
35356	1 Clamp Assembly w/Locking Plate	1500	3.00	1.5	1.87	1.215	.75	.62	1.20	10-32	1/2-13
35357	1 Clamp Assembly, No Locking Plate	1500	3.00	1.5	1.87	1.215	.75	.62	1.20	10-32	1/2-13
35358	1 Clamp Assembly w/Locking Plate	2000	4.00	2.0	2.5	1.625	1.0	.80	1.625	1/4-20	5/8-11
35359	1 Clamp Assembly, No Locking Plate	2000	4.00	2.0	2.5	1.625	1.0	.80	1.625	1/4-20	5/8-11

\*A: The distance needed between workpieces for clamp clearance, drill and tap mounting holes on the center of "A" dimension.

\*\*F: The amount of machinable stock on jaws.

\*\*\*Mounting Screws included.