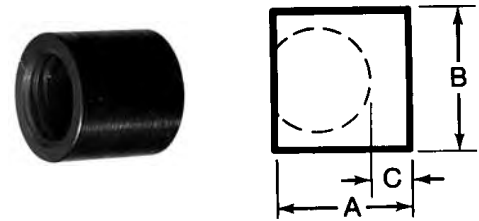


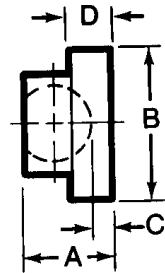
## Pads for Swivel Screw Clamp Systems

- Used to secure clamping of soft metal or angular surface without damaging workpiece
- Assembly includes: 1 Swivel Clamp Body and 1 Pad
- For material information, see individual components
- Material: 12L14 Steel
- Black Oxide Finish
- Left Hand internal threads



### Small Pad

Part No.	Fit Body Thread Size	A	B	C	Internal Thread (left hand)	Weight (lbs/100pcs)
<b>31501</b>	1/4-20	0.193	3/16	1/16	8-36	1
<b>31502</b>	5/16-18	19/64	1/4	3/64	12-28	1
<b>31503</b>	3/8-16	21/64	19/64	1/16	1/4-28	1
<b>31504</b>	1/2-13	25/64	13/32	1/16	5/16-24	2



### Large Pad

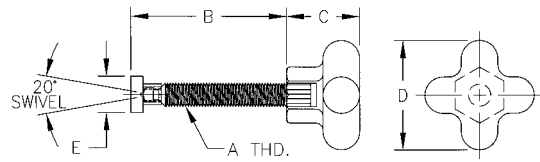
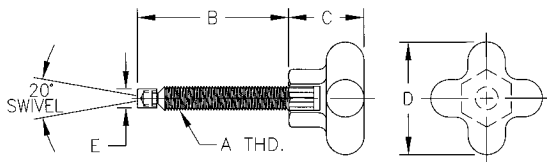
Part No.	Body Thread Size	A	B	C	D	Internal Thread (left hand)	Weight (lbs/100pcs)
<b>31601</b>	1/4-20	5/16	3/8	1/8	1/8	8-36	1
<b>31602</b>	5/16-18	23/64	1/2	9/64	5/32	12-28	1
<b>31603</b>	3/8-16	7/16	9/16	11/64	3/16	1/4-28	1
<b>31604</b>	1/2-13	27/64	3/4	1/8	3/16	5/16-24	2

## Swivel Screw Clamp Assemblies

- Assembly includes: 1 Swivel Clamp Body and 1 Pad
- For material information, see individual components



### Hand Knob Head Swivel Screw Clamp Assemblies



### Small Pad

Part No.	A	B	C	D	E	Wt. (lbs/100pcs)
<b>31121S</b>	1/4-20	1.50	3/4	1-1/8	3/16	6
<b>31122S</b>	1/4-20	2.00	3/4	1-1/8	3/16	7
<b>31131S</b>	5/16-18	1.50	7/8	1-1/2	1/4	8
<b>31133S</b>	5/16-18	2.50	7/8	1-1/2	1/4	9
<b>31141S</b>	3/8-16	1.50	1	2	19/64	11
<b>31142S</b>	3/8-16	2.00	1	2	19/64	13
<b>31144S</b>	3/8-16	3.00	1	2	19/64	15
<b>31154S</b>	1/2-13	3.00	1-1/2	2-1/2	13/32	33
<b>31155S</b>	1/2-13	4.00	1-1/2	2-1/2	13/32	37

### Large Pad

Part No.	A	B	C	D	E	Wt. (lbs/100pcs)
<b>31121L</b>	1/4-20	1.60	3/4	1-1/8	3/8	6
<b>31122L</b>	1/4-20	2.10	3/4	1-1/8	3/8	7
<b>31131L</b>	5/16-18	1.60	7/8	1-1/2	1/2	8
<b>31133L</b>	5/16-18	2.60	7/8	1-1/2	1/2	9
<b>31141L</b>	3/8-16	1.60	1	2	9/16	11
<b>31142L</b>	3/8-16	2.10	1	2	9/16	13
<b>31144L</b>	3/8-16	3.10	1	2	9/16	15
<b>31154L</b>	1/2-13	3.10	1-1/2	2-1/2	3/4	33
<b>31155L</b>	1/2-13	4.10	1-1/2	2-1/2	3/4	37