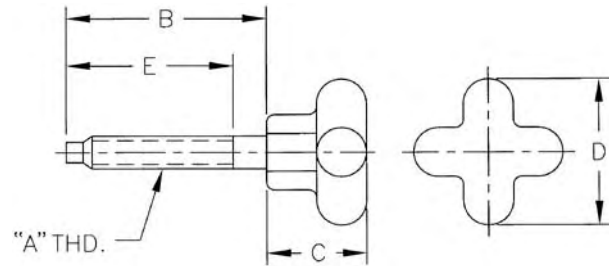


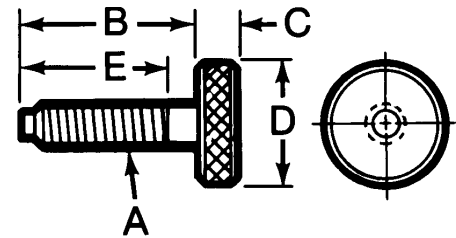
Dog Point Hand Knob Screws



- Material:
 - Knob: Cast Aluminum
 - Stem: 12L14 Steel
- Stem only: Black Oxide Finish, Case Hardened
- Many sizes conform to TCMAI standards
- Use when hand tightening is necessary for holding or clamping
- Dog point prevents damage to end threads

Part No.	Thread A	B	C	D	E	Weight (lbs/100pcs)
31025	1/4-20	1-1/2	3/4	1-1/8	1-1/4	5
31026	1/4-20	2	3/4	1-1/8	1-3/4	5
31027	1/4-20	2-1/2	3/4	1-1/8	2-1/4	6
31031	5/16-18	2	7/8	1-1/2	1-3/4	9
31032	5/16-18	2-1/2	7/8	1-1/2	2-1/4	9
31040	3/8-16	2-1/6	1	2	1-3/4	12
31041	3/8-16	2-9/16	1	2	2-1/4	14
31042	3/8-16	3-1/16	1	2	2-3/4	15
31050	1/2-13	2-9/16	1-1/2	2-1/2	2-1/4	35
31051	1/2-13	3-1/16	1-1/2	2-1/2	2-3/4	31
31052	1/2-13	3-9/16	1-1/2	2-1/2	3-1/4	39

Dog Point Knurled Head Screws



- Material: 12L14 Steel
- Black Oxide Finish
- Case Hardened
- Many sizes conform to TCMAI standards
- Use for light clamping or holding
- Knurled head allows better grip
- Dog point prevents damage to end threads
- Special sizes quoted upon request

Part No.	Thread A	B	C	D	E	Weight (lbs/100pcs)
43801	10-24	1	1/4	3/4	3/4	3
43802	10-24	1-1/2	1/4	3/4	1-1/4	3
43803	10-24	2	1/4	3/4	1-3/4	3
43804	10-32	1-1/2	1/4	3/4	1-3/8	3
43805	1/4-20	2	5/16	1	1-3/4	5
43806	1/4-20	2-1/2	5/16	1	2-1/4	9
43807	1/4-20	1-1/2	5/16	1	1-1/4	9
43808	5/16-18	1-1/2	3/8	1-1/8	1-1/4	6
43809	5/16-18	2	3/8	1-1/8	1-3/4	11
43810	5/16-18	2-1/2	3/8	1-1/8	2-1/4	13
43813	3/8-16	2	7/16	1-1/4	1-3/4	13
43811	3/8-16	2-1/2	7/16	1-1/4	2-1/4	24
43812	3/8-16	3	7/16	1-1/4	2-3/4	27
43814	1/2-13	3	7/16	1-1/4	2-3/4	28
43815	1/2-13	3-1/2	7/16	1-1/4	3-1/4	30