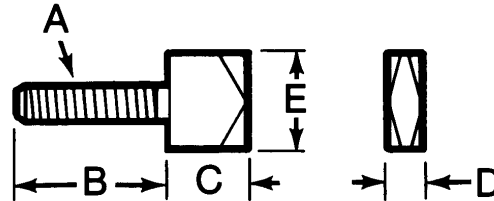


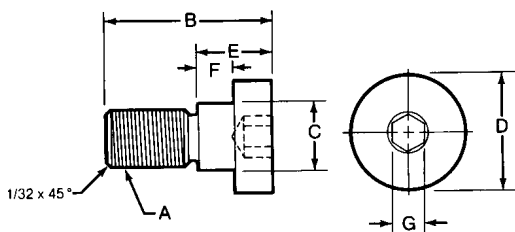
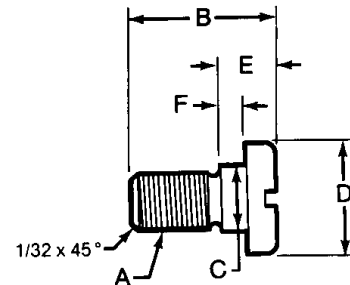
Quarter Turn Screws



- Material: 1018 Steel
- Black Oxide Finish
- Many sizes conform to TCMAI standards
- Chamfered corners for self alignment of screw

Part No.	Thread A	B	C	D	E	Weight (lbs/100pcs)
43901	10-24	1	1/2	3/16	1/2	3
43902	10-32	1	1/2	3/16	1/2	3
43903	1/4-20	1-1/4	5/8	1/4	3/4	5
43904	5/16-18	1-1/2	3/4	5/16	1	9
43905	3/8-16	1-1/2	1	3/8	1	11

Lock Screws



Slotted Lock Screws

Part No.	Thread A	B	C	D	E	F	Wt. (lbs/100pcs)
79110	8-32	7/16	3/16	5/16	3/16	.094/1.00	1
79111	5/16-18	5/8	3/8	5/8	1/4	.132/.128	2
79112	5/16-18	7/8	3/8	5/8	3/8	.194/.200	3
79113	3/8-16	1	7/16	3/4	3/8	.194/.200	4
79114	3/8-16	1-1/16	7/16	3/4	7/16	.225/.231	5
79115	3/8-16	1-1/8	7/16	3/4	1/2	.257/.263	5

Socket Head Lock Screws

Part No.	Thread A	B	C	D	E	F	Hex G	Wt. (lbs/100pcs)
79130	8-32	7/16	3/16	5/16	3/16	.094/.100	3/32	1
79131	5/16-18	5/8	3/8	5/8	1/4	.132/.138	3/16	2
79132	5/16-18	7/8	3/8	5/8	3/8	.194/.200	3/16	3
79133	3/8-16	1	7/16	3/4	3/8	.194/.200	7/32	4
79134	3/8-16	1-1/16	7/16	3/4	7/16	.225/.231	7/32	5
79135	3/8-16	1-1/8	7/16	3/4	1/2	.257/.263	7/32	5