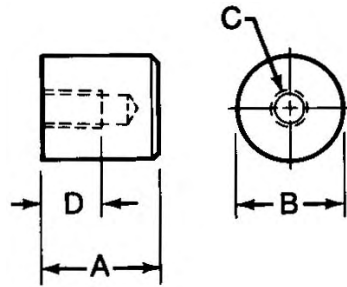


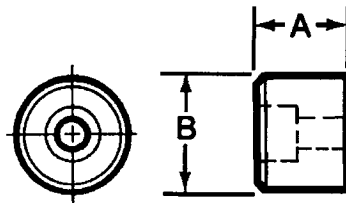
Tapped Jig Feet



- Material: 1018 Steel, Black Oxide Finish
- Case Hardened
- Use to support or locate workpiece.
- Use to raise jigs and fixtures off of machine table

Part No.	+0.001 -0.000 A	B	C	D	Wt. (lbs/100 pcs)
44150	3/8	5/8	10-32	1/4	3
44151	1/2	5/8	10-32	1/4	4
44152	3/4	5/8	10-32	5/16	6
44153	1	5/8	10-32	5/16	8
44154	1/2	7/8	5/16-18	5/16	8
44155	3/4	7/8	5/16-18	1/2	12
44156	1	7/8	5/16-18	1/2	16
44157	3/4	1-1/4	3/8-16	9/16	24
44158	1	1-1/4	3/8-16	9/16	32
44159	1-1/2	1-1/4	3/8-16	9/16	49

Button Jig Feet

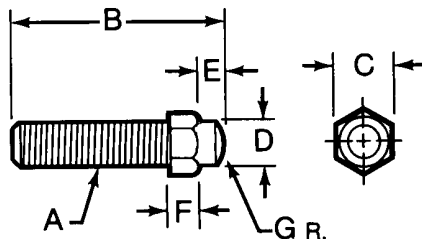


- Material: 12L14 Steel, Black Oxide Finish
- Case Hardened
- Many sizes conform to TCMAI standards.
- Screw not furnished
- Length dimension is finished ground
- Use to locate or support workpiece
- Use to raise jigs and fixtures off machine table

Socket Head Cap Screw
* Flat Head Cap Screw

Part No.	+0.001 -0.000 A	B	Screw Type & Size	Wt. (lbs/100 pcs)
44103	3/8	1/2	10-32*	1
44104	1/2	1/2	10-32*	2
44105	1/4	5/8	10-32*	1
44107	3/8	5/8	1/4#	2
44109	1/2	5/8	1/4#	3
44110	5/8	5/8	1/4#	4
44111	3/4	5/8	1/4#	5
44113	1	5/8	1/4#	7
44115	1/2	7/8	5/16#	6
44117	3/4	7/8	5/16#	10
44118	1	7/8	5/16#	13
44119	3/4	1-1/4	3/8#	21
44120	1	1-1/4	3/8#	29
44121	1-1/2	1-1/4	3/8#	44
44122	2	1-1/4	3/8#	60

Pre-Set Buttons



- Material: 12L14 Steel
- Black Oxide Finish
- Case Hardened
- Many sizes conform to TCMAI standards

Part No.	A	B	C	D	E	F	G	Wt. (lbs/100pcs)
44290	10-32	1	1/4	3/16	1/8	1/8	1/8	1
44291	14-28	1-1/2	3/8	1/4	3/16	3/16	3/16	2
44292	3/8-24	2	1/2	3/8	1/4	1/4	1/4	6
44293	1/2-20	2-1/2	5/8	1/2	5/16	5/16	5/16	13
44294	5/8-18	3	3/4	5/8	3/8	3/8	3/8	25