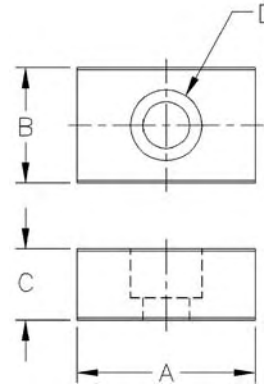


## Plain Fixture Keys

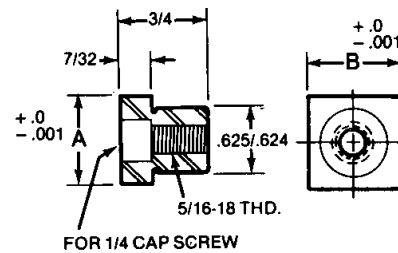
- Material: 1018 Steel
- Black Oxide Finish
- Case Hardened
- Many sizes conform to TCMAI standards
- Precision Ground
- Use to accurately align fixture on machine table
- Special sizes quoted upon request



Part No.	A	+0.000 -0.0005 B	C	Socket Head Screw D	Wt. (lbs/100 pcs)
44501	3/4	.5000	1/2	1/4	4
44502	3/4	.5625	1/2	1/4	5
44503	3/4	.625	1/2	5/16	6
44504	1	.6875	1/2	5/16	8
44505	1-1/4	.750	1/2	5/16	11
44506	1-1/4	.8125	1/2	5/16	13

## Round Fixture Keys: Locking & Standard

- Material: 1018 Steel
- Black Oxide Finish
- Case Hardened
- Use to accurately align fixture on machine table
- Use standard keys on through holes
- Use locking keys in blind holes
- Locking keys are easily locked into position and removed
- Locking key assembly includes:
  - Fixture Key
  - Socket Head Cap Screw
  - Split Ring
  - Taper Plunger
- Split ring expands in hole by turning screw



Locking Part No.	Wt. (lbs/100 pcs)	Standard Part No.	Wt. (lbs/100 pcs)	+0.000 -.001 A	+0.000 -.001 B
44520	8	44510	5	5/8	11/16
44521	8	44511	6	11/16	3/4
44522	9	44512	6	11/16	13/16
44523	9	44513	6	3/4	13/16