

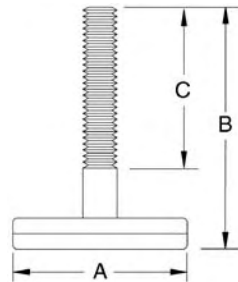
Leveling Mount – Light Duty



Ideal for use on light duty machinery, fitness equipment and other light duty applications.

- Chrome plated steel cup
- Zinc plated steel stud
- Hard nylon or soft TPR anti-skid bases available
- Special order stainless steel version available

High quality, low cost



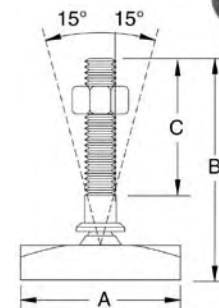
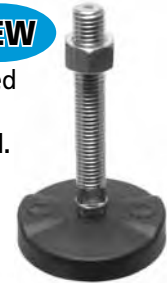
Part No.	A	B	C	Pad Material
71100	1.14	1.37	1/4-20 x 1	PP
71101	1.38	1.50	1/4-20 x 1	Nylon/TPR
71102	1.38	1.50	5/16-18 x 1	Nylon/TPR
71103	1.65	1.87	5/16-18 x 1-3/8	Nylon/TPR
71104	1.97	1.62	3/8-16 x 1	Nylon/TPR
71105	2.24	1.62	3/8-16 x 1	Nylon/TPR
71106	2.56	1.62	1/4-20 x 1	Nylon
71107	2.95	2.12	3/8-16 x 1-3/16	PP

Poly Pads – Stud Style

NEW

Ball and stud assembly are CNC machined from solid bar stock. Zinc plated with integrated stop collar. **Lock nut included.**

- Material:
 - Pad: 30% glass fiber filled nylon
 - Stud: 1117 zinc plated steel
- Pop-out caps expose holes for floor mounting
- Volume order stainless steel version available



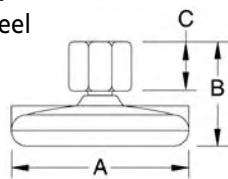
Part No.	A	B	C	Lag Hole	Wrench Flat	Max Load Rating
71109	1.97	5.29	3/8-16 x 4	.257	.55	4000 lbs.
71110	1.97	7.29	3/8-16 x 6	.257	.55	4000 lbs.
71112	1.97	5.29	1/2-13 x 4	.257	.55	4000 lbs.
71113	1.97	7.29	1/2-13 x 6	.257	.55	4000 lbs.
71115	1.97	5.29	5/8-11 x 4	.257	.55	4000 lbs.
71116	1.97	6.29	5/8-11 x 5	.257	.55	4000 lbs.
71117	1.97	7.29	5/8-11 x 6	.257	.55	4000 lbs.
71119	3.15	5.29	3/8-16 x 4	.354	.55	5000 lbs.
71120	3.15	7.29	3/8-16 x 6	.354	.55	5000 lbs.
71122	3.15	5.29	1/2-13 x 4	.354	.55	5000 lbs.
71123	3.15	7.29	1/2-13 x 6	.354	.55	5000 lbs.
71125	3.15	5.29	5/8-11 x 4	.354	.55	5000 lbs.
71126	3.15	6.29	5/8-11 x 5	.354	.55	5000 lbs.
71127	3.15	7.29	5/8-11 x 6	.354	.55	5000 lbs.
71129	4.33	5.53	3/8-16 x 4	.413	.55	5000 lbs.
71130	4.33	7.53	3/8-16 x 6	.413	.55	5000 lbs.
71132	4.33	5.53	1/2-13 x 4	.413	.55	5000 lbs.
71133	4.33	7.53	1/2-13 x 6	.413	.55	5000 lbs.
71135	4.33	5.53	5/8-11 x 4	.413	.55	6000 lbs.
71136	4.33	6.53	5/8-11 x 5	.413	.55	6000 lbs.
71137	4.33	7.53	5/8-11 x 6	.413	.55	6000 lbs.

Poly Pads – Tapped Style

NEW

Ball and tapped hex are CNC machined from solid bar stock. Zinc plated with integrated stop collar.

- Material:
 - Pad: 30% glass fiber filled nylon
 - Hex nut: 1117 zinc plated steel
- Pop-out caps expose holes for floor mounting
- Volume order stainless steel version available



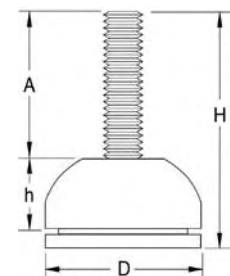
Part No.	A	B	C	Tap	Lag Hole	Hex	Max Load Rating
71140	1.97	1.66	.944	3/8-16	.257	5/8	4000 lbs.
71141	1.97	1.66	.944	1/2-13	.257	3/4	4000 lbs.
71142	1.97	1.66	.944	5/8-11	.257	7/8	4000 lbs.
71143	3.15	1.66	.944	3/8-16	.354	5/8	5000 lbs.
71144	3.15	1.66	.944	1/2-13	.354	3/4	5000 lbs.
71145	3.15	1.66	.944	5/8-11	.354	7/8	5000 lbs.
71146	4.33	1.91	.944	3/8-16	.413	5/8	4000 lbs.
71147	4.33	1.91	.944	1/2-13	.413	3/4	5000 lbs.
71148	4.33	1.91	.944	5/8-11	.413	7/8	6000 lbs.

Thermoplastic Fixed Foot

NEW

Strong and economical leveler with fixed non-swivel base.

- Material:
 - Base: Reinforced PA6 nylon
 - Stud: Zinc plated steel



Shown with optional non-skid rubber pad

Part No.	A	D	d	H	h	Load Rating	Pad No.
71150	1.50	1.26	5/16-18	2.01	.51	1760 lbs.	NSP-01
71151	1.75	1.26	1/2-13	2.26	.51	1760 lbs.	NSP-01
71152	1.50	1.57	5/16-18s	2.01	.51	1760 lbs.	NSP-02
71153	1.75	1.57	3/8-16	2.26	.51	1760 lbs.	NSP-02

Strong, durable, economical